



---

# PARTS BOOK

---

**KS-Series**

**Tubular-small**

**KS-UH1506-45**

**PME-200318**

# Information

## A. Parts Book 구성

### Structure of Part Book

①

**A-1** Arm/Bed Mechanism  
암/베드 관계

②

③

④

Part No.	Part No.	Part Name	품명	Applicable date	Interchange ability	Hard ware	Q'ty	Remarks
1	OMB-LA02001	Face Plate	면판				1	
2	OMB-FC00002	Face Plate Gasket	면판 개스킷				1	
3	DSC-SP00103	Spacer	삽입장판너사				2	
4	DFC-CB00101	Rubber Cup	부착용 고무컵				2	
5	DSC-SD00105	Spacer	등간삽입장판너사				2	
6	AMB-PT00106	Sliver Plate Assembly	인양판(조)				1	
7	OMB-SD00107	Sliver Plate Bracket	인양판 브래킷				1	
8	DSC-SD00108	Spacer	등간삽입장판너사				2	
9	DSC-FA00109	Wedge Spacer	삽입 장판너사				1	
10	DSP-AC00110	Tension Spring	시중용 코일 스프링				1	
11	DWS-AA00111	Washer	원형 평 washer				1	
12	DSP-AA00112	Nut	축 너트				1	
13	OMB-S000113	Sliver Plate Holder	인양판 홀더				1	
14	OMB-S000114	Sliver Plate	인양판				1	
15	DSC-S000115	Spacer	등간삽입장판너사				2	
16	DWS-AA00116	Washer	원형 평 washer				2	
17	DSC-HD00117	Tension Holder Screw	스프링 홀더 너사				1	
18	DSP-AA00118	Nut	축 너트				1	
19	DSC-BA00119	Spacer	별대 장판너사				2	
20	OMB-HE00120	Thread Guide	삽판대				1	
21	DSP-AA00121	Nut	축 너트				1	
22	OMB-HE00122	Thread Guide	삽판대				1	
23	OMB-HE00123	Thread Guide	삽판대				1	
24	OMB-LA00124	Thread Stop / Low Case	삽판대 저 케이스				1	
25	DSC-S000125	Spacer	등간삽입장판너사				1	
26	DFC-CB00126	Rubber Cup	부착용 고무컵				4	
27	DFC-CB00127	Rubber Cup	부착용 고무컵				1	
28	OMB-HE00128	Thread Guide	삽판대				2	
29	DSC-SP00129	Spacer	삽판대 장판너사				2	
30	OMB-HE00130	Thread Guide	삽판대				1	
31	DSP-AA00131	Nut	축 너트				1	
32	AMB-PT00132	Sliver Tank Assembly	삽판용 슬리버 탱크(조)				1	
33	OMB-S000133	Sliver Tank	삽판용 탱크				1	
34	OMB-L000134	Sliver Pad	삽판용 슬리버 패드				1	
35	OMB-S000135	Sliver Pad Holder	삽판용 슬리버 패드 홀더				1	
36	DSC-S000136	Spacer	등간삽입장판너사				1	
37	OMB-0100137	Sliver Oil Washer	삽판용 오일 워셔				1	
38	DSC-CB00138	Top Cover	축간구멍 커버 장판너사				1	
39	SP-03017-08	Top Cover(2)	인양판(조)				1	
40	DSC-SP00140	Spacer	삽판대 장판너사				2	
41	OMB-SD00141	Double Washer Thread Nut	중간 너트				1	
42	DSC-SD00142	Spacer	등간삽입장판너사				2	
43	AMB-PT00143	SliverHolder/SliverHolderNut	삽판대 삽입용 코일 장판너사(조)				1	
44	OMB-HE00144	Thread Guide Flange	삽판대 플랜지				1	
45	OMB-0301111	Thread Guide Adhesive Grit	삽판대 접착제				1	
46	CTA-HE00146	Thread Guide Grit	삽판대 접착제				1	
47	CTA-SD00147	Spring Cover	스프링 커버				1	
48	DSP-BA00148	Control Spring	부하조정 스프링				1	
49	CTA-S000149	Tension Stopper	스프링 스톱퍼				1	
50	DSP-CB00150	Thread Adjusting Nut	삽판대 조정 너트				1	

⑦

⑧

⑨

⑩

⑪

① 관계 별 고유 코드

Unique code by mechanism

② 관계 별 고유 명칭

Unique name by mechanism

③ 관계도

Explode view

④ Ref No: 파트별 고유 식별 번호

Unique identification number by part

⑤ Parts No.: 고유 제품 코드

Unique Product code

⑥ 품 명: 파트의 고유 품명

Name of Part: Unique name of parts

⑦ Application date: 제품 적용일

⑧ Interchangeability: 대체 가능여부

⑨ Hardware: 시중에서 구매할 수 있는 부품

Parts that can be purchased in the market

⑩ Q'ty : 파트의 수량

The number of parts

⑪ Remarks : 비고

ex)

구분 Category	Code	비고 Remarks
구 부품 Oldpart	01-030C-1230	
신 부품 NewPart	AS-000000-00	조(組)파트 Setparts
	GP-000000-00	기구적 파트 Instrumentalparts
	EP-000000-00	전기적 파트 Electricalparts

# Warning

1. 조에 속한 파트는 개별 조립 시 제품의 파손 또는 재봉 불량 발생될 수 있어 해당 파트에 대한 주문 시에는 조 품목으로만 구입이 가능합니다.
2. 본 책자는 Parts Book으로 제작되었으므로 매뉴얼로 사용 불가합니다.
3. 사전 예고 없이 사양이 변경 될 수도 있습니다.

- 1.The parts classified as ass'y items may cause damage to the machine or bad sewing when they are separately assembled. Hence, when they are ordered, they can be purchased as ass'y items only.**
- 2.This is a parts book. It cannot be used as a manual.**
- 3.Parts are Subject to change in Design Without Prior Notice.**

## Note

- 썬스타 제품의 부품은 아래 인터넷주소로 접속하시어 신청할 수 있습니다.  
<http://www.sunstarcs.com>
- 가입된 회원께서는 썬스타 포탈 사이트에 로그인후 필요한 부품을 신청할 수 있습니다.
- 부품관리-발주관리-발주등록 항목에서 부품번호와 신청수량을 입력하여 등록하시면 발주가 됩니다.
- 부품번호를 모르시는 경우 파츠북 조회를 클릭하시고 사용하는 기종을 검색하여 선택하시면 해당 기종의 파츠북을 조회할 수 있습니다.
- 파츠북은 관계별로 구분되어 있으며 관계를 알고 있다면 부품 찾기가 용이합니다.
  
- You can make an order for the parts of Sunstar machine to connect internet address.  
<http://www.sunstarcs.com>
- You can request for parts you want after login if you are a registered member.
- In parts Management – Order Management – Order Registration entry, you can place an order by entering the part number and quantity.
- If you don't know the parts number, click the parts book menu bar.
- In a download list, you can read parts book by searching model you use.
- This parts book is classified by the mechanism, therefore you can find part easily.

# 목 차

## CONTENTS

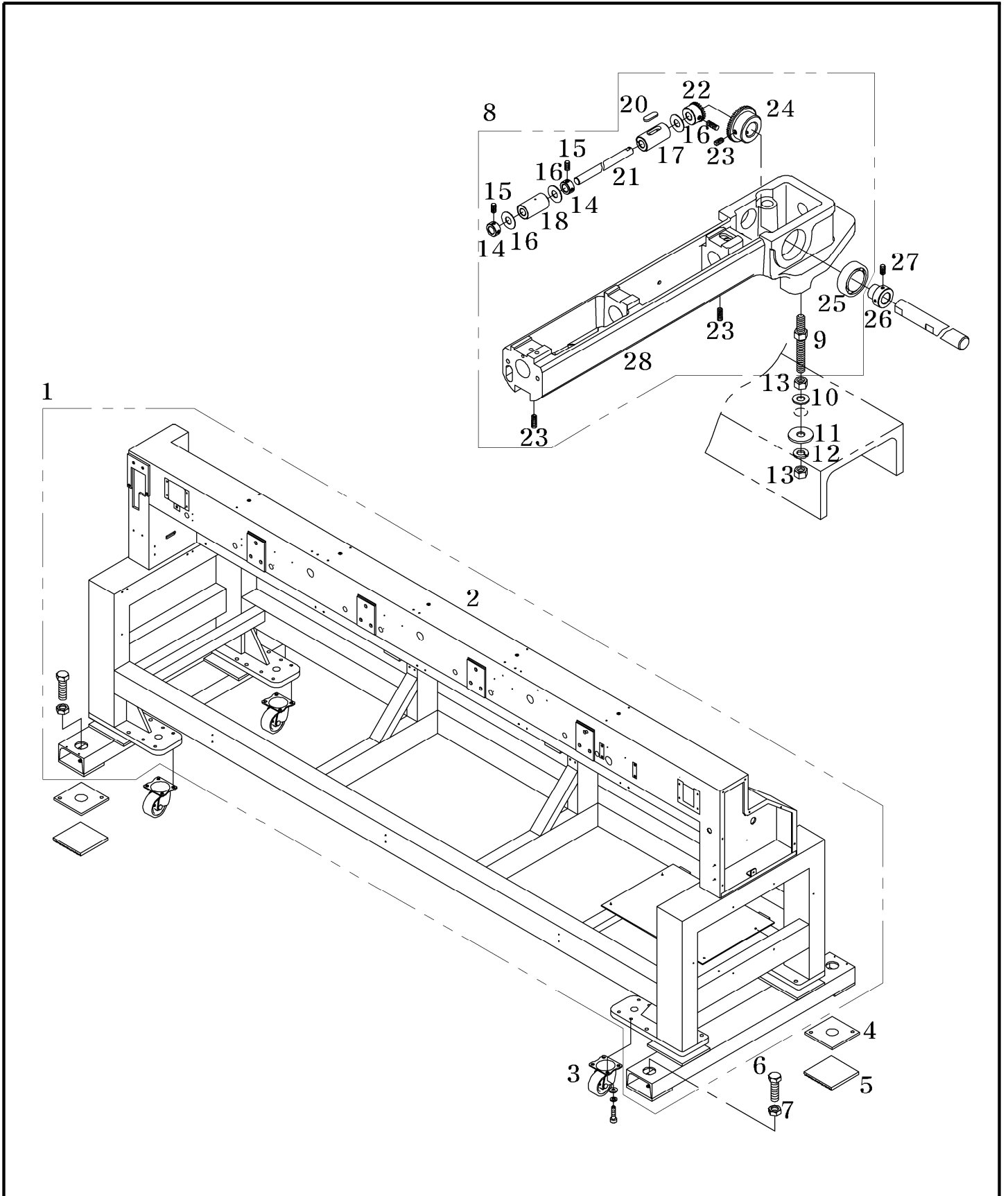
A. Beam Body & Bed Mechanism .....	1
B. Arm1 Mechanism .....	3
C. Arm2 Mechanism .....	6
D. Thread Cutting Set Mechanism .....	10
E. Main Drive System Mechanism .....	13
F. Head & Color Change Mechanism .....	16
G. Thread Tension Unit Mechanism .....	19
H. X-Y Drive Mechanism .....	21
I. Setting Mechanism .....	27
J Spool Mechanism .....	31
K. Table Mechanism .....	33
L. Cable Mechanism .....	36
M. Control Box & OP Box .....	39
N. Lamp & Switch Mechanism .....	43

<b>O. Bobbin Winder Mechanism .....</b>	<b>45</b>
<b>P. Cover Mechanism .....</b>	<b>47</b>
<b>Q1. Tubular Mechanism .....</b>	<b>49</b>
<b>Q2. Border Frame Mechanism .....</b>	<b>51</b>

# A

## Beam Body & Bed Mechanism

### 빔바디 & 베드 관계

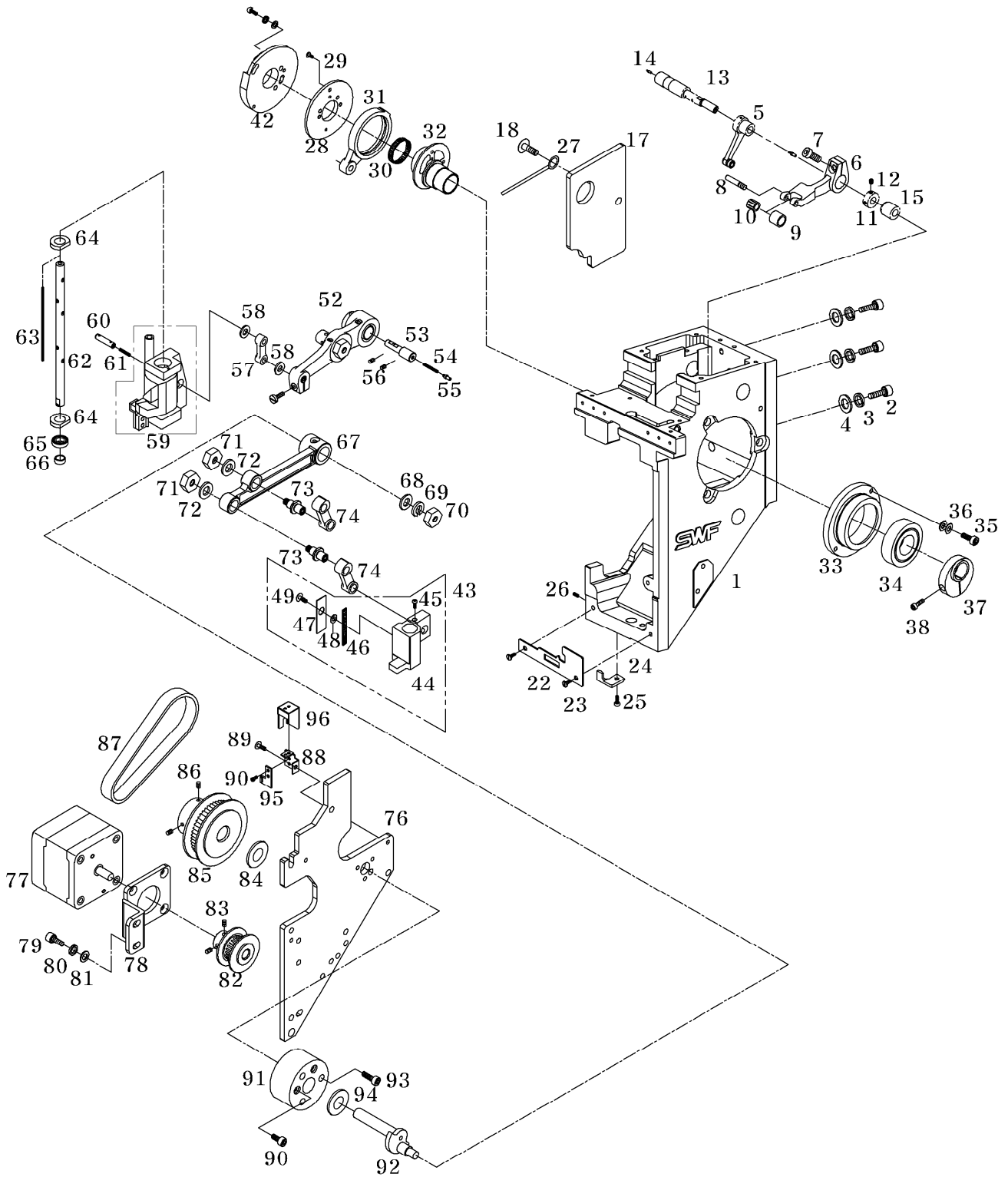


Ref. No	Part No.	Part Name	품명	Applicat iondate	Interchan geability	Hard ware	Qty	Re marks
1	AS-021294-03	Beam Body Assy	빔바디(조)				1	
2	GP-060021-03	Beam Body	빔바디(KS-UH1506-45)				1	
3	CR-000001-01	HAMMER CASTER SET	해머 캐스터 세트				4	
4	GP-010074-00	Leveling Base	레벨링 베이스				4	
5	CST-FD002400	Body Leveling Plate	바디 레벨링 플레이트 용 고무				4	
6	SC-001511-00	Hex. Bolt (M20*L150)	육각볼트 (M20 * L150)				4	
7	PSN-AA005700	Hex. Nut (M20-No2)	육각너트 (M20-No2)				4	
8	AS-015249-02	Bed Assy (#1)	베드(조)				6	
9	DSC-FG003400	STUD BOLT (M10*P1.25*L69)	스터드 볼트(M10*P1.25*L69)				18	
10	DWS-AA023700	WASHER (3.2T,@10)	와셔 (3.2T, @ 10)			○	36	
11	DWS-AA023800	WASHER (2T,@10)	와셔 (2T, @ 10)			○	18	
12	PWS-CA002900	SPRING WASHER(@10)	스프링 와셔 (@ 10)			○	6	
13	DSN-AA006900	HEX. NUT (M10*P1.25)	육각너트 (M10 * P1.25)			○	18	
14	DCL-AA014300	Solenoid Collar	솔레노이드 칼라				12	
15	PSC-CB005000	Collar Screw	칼라 스크류			○	12	
16	DWS-AA007200	Hook Shaft Bearing Washer	훅축 베어링 와셔				6	
17	DBS-DA045601	Hook Shaft Rear Bushing	훅축후붓싱				6	
18	DBS-DA045700	Hook Shaft Front Bushing	훅축전붓싱				6	
20	18039SF-UK01	Felt	펠트				6	
21	LHB-KC000300	Hook Shaft	훅크 샤프트				6	
22	DGR-AD002300	Hook Shaft Gear	훅크 샤프트 기어				6	
23	DSC-CB003200	Hook Shaft Bush Screw	훅크 샤프트 부시 나사				12	
24	DGR-AD002400	Low Shaft Gear	하축 기어				6	
25	PBR-AA004100	Ball Bearing 6003Z	볼 베어링 6003Z				6	
26	DCL-AB005402	Bearing Bushing	베어링 부싱				6	
27	DSC-CB003300	Cam Collar Screw	캠 칼라 스크류				12	
28	LHB-AB000701	Bed	베드				6	

# B

## Arm1 Mechanism

### 암1 관계





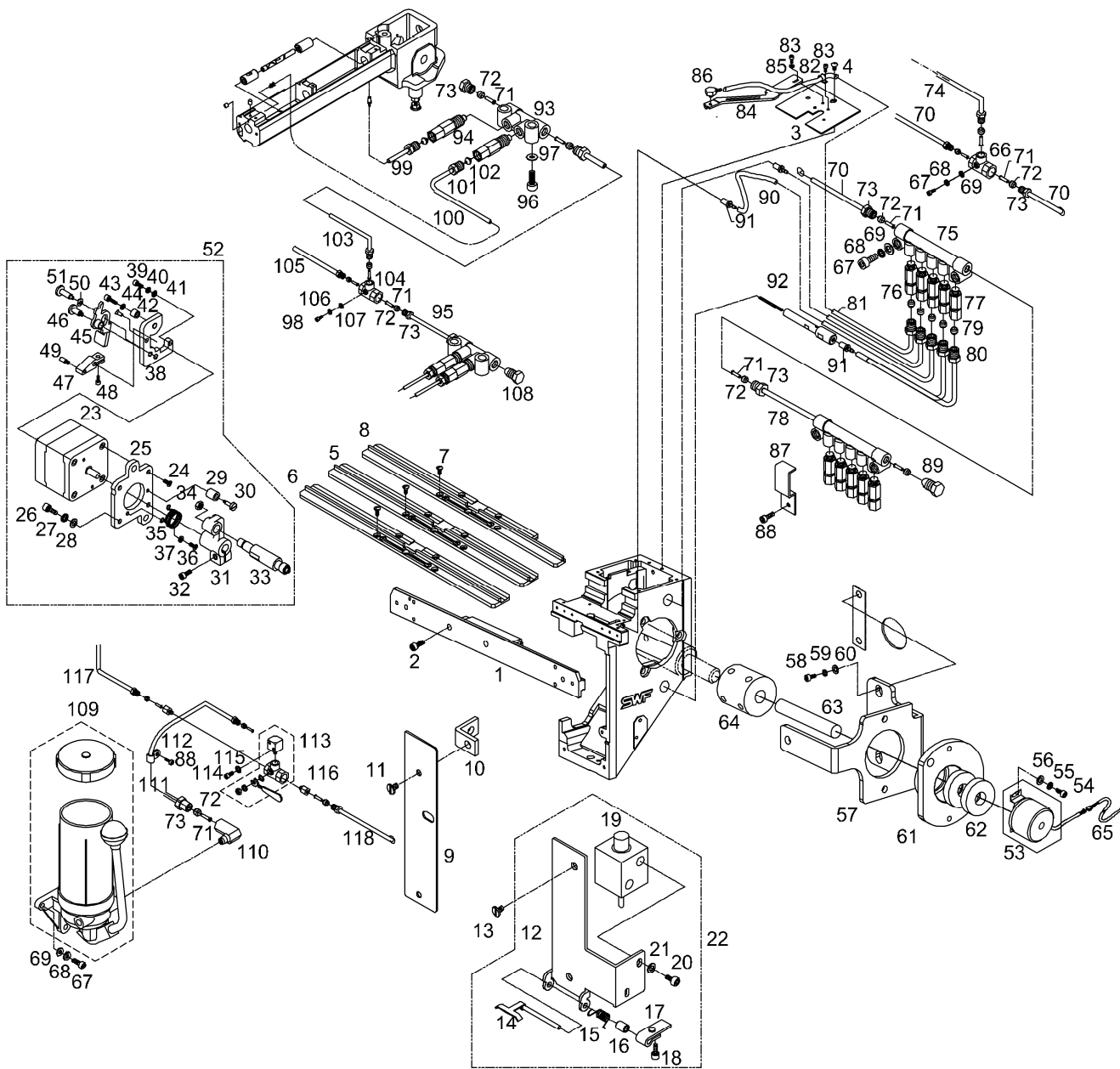
Ref. No	Part No.	Part Name	품 명	Applicat iondate	Interchan geability	Hard ware	Q'ty	Re marks
1	GP-060945-01	ARM	암				6	
2	PSC-AC007700	Hex. Socket Bolt	육각구멍 볼트			○	18	
3	PWS-CA002000	Spring Washer (@8)	스프링 와셔 (@ 8)				18	
4	DWS-AA009900	Stud Bolt Washer(S) (@8)	스터드 볼트 와셔 (@ 8)			○	18	
5	GP-052534-00	Take-Up Driving Lever "A"	실채기 구동 레버 "A"				6	
6	LTH-CM000100	Take-Up Driving Lever "B"	실채기 구동 레버 "B"				6	
7	PSC-AC004900	Hex.Socket Bolt(M4*L12)	육각볼트 (M4 * L12)			○	6	
8	DSC-FF003200	Pin Stud Screw	스터드 나사 핀				6	
9	LTH-CL000100	Roller for Take-Up Lever B	실채기로올러B				6	
10	PBR-BA004500	Needle Bearing (KT367N IKO)	니들 베어링 (KT367N IKO)			○	6	
11	DCL-AA010400	Pin Collar	핀 카라				6	
12	PSC-CB000600	Hex.Socket Set Screw(M4*L5)	육각구멍 고정 나사 (M4 * L5)			○	12	
13	03301000B000	TAKE-UP LEVER PIN	실채기 레버 핀				6	
14	LLB-JP000200	Hook Oil Supply Nipple	훅 오일 공급 니플				18	
15	DBS-DA033300	Bushing	부싱				6	
17	GP-060947-00	ARM SIDE COVER B	암 측면 커버 B				6	
18	PSC-BH001600	SCREW (9/64,N40,L8)	나사 (9 / 64, N40, L8)				6	
22	LAM-BJ000300	Arm Bearing Guide Plate	암 베어링 가이드판				6	
23	DSC-BC001500	Bolt (9/64" n=40)	볼트 (9/64 "n = 40)				12	
24	LAM-BF000100	Head Rail Holder	헤드 레일 홀더				6	
25	DSC-AC001400	Head Rail Holder Screw	헤드 레일 홀더 나사				6	
26	PSC-CB004900	Drive Pin Screw 11/64,N40,L8	드라이브 핀 나사 11 / 64, N40, L8				6	
27	PTC-AH000600	Cable Fastener	케이블 고정 장치				12	
28	LAM-BA000200	CAM BASE	캠 베이스				6	
29	DSC-BB005400	Cam Base Screw	캠 베이스 스크류				18	
30	PBR-BF001000	NEEDLE CASE (KT-42469)	니들 케이스 (KT-42469)				6	
31	LNB-CC000102	Connecting Rod	바늘대 구동축 연결로드				6	
32	LAM-DC000200	NEEDLE BAR DRIVING CAM	바늘대 구동 캠				6	
33	LMD-LC000100	Bearing Case A @20	베어링 케이스 A @ 20				6	
34	PBR-AA009900	Ball Bearing (6005Zz)	볼 베어링 (6005Zz)				6	
35	PSC-AC004500	Hex. Socket Screw(M5*L10)	육각구멍 나사 (M5 * L10)			○	18	
36	DWS-AA019400	Washer (5@)	와셔 (5 @)			○	36	
37	DCL-AF000302	Collar for Upper Shaft Bearing	상축베어링카라				6	
38	PSC-AC017400	Hex. Socket Bolt (M5*L15)	육각구멍 볼트 (M5 * L15)			○	6	
42	LAM-DG000200	Take-up Lever Driving Cam	실채기 레버 구동 캠				6	
43	AS-005406-04	Presser Foot Driving Assy	노루발제어체(조)				6	
44	LPF-CW000100	Reciprocator	노루발 제어체				36	
45	PSC-BH001600	Screw(9/64" n=40,L=8)	나사 (9/64 "n = 40, L = 8)				36	
46	LLB-JL000100	Felt	펠트				36	
47	LLB-BB000100	Felt Holder	펠트 홀더				36	
48	PWS-CA001800	Spring Washer	스프링 와셔				36	
49	DSC-BH000600	Screw(M3 x L5)	나사 (M3 x L5)				36	
52	GP-060948-00	NeedleBar Driven lever	바늘대 구동 레버				6	
53	DPN-BC006600	NEEDLE BAR DRIVE PIN	바늘대구동핀				6	
54	LLB-JD000100	Wick	유심				6	
55	LLB-JP000100	Hook Oil Supply Nipple	훅 오일 공급 니플				6	
56	PSC-CB004900	Drive Pin Screw 11/64,N40,L8	드라이브 핀 나사(11/64,N40,L8)			○	12	
57	LNB-CA000200	Needle Bar Drive Rink	노루발구동레버연결링크				6	
58	DWS-AA019900	Reciprocator Washer	와셔				12	
59	AS-021535-00	Needle Bar Reciprocator A'ssy	바늘대제어체(조)				6	

Ref. No	Part No.	Part Name	품 명	Applicat iondate	Interchan geability	Hard ware	Q'ty	Re marks
60	DPN-AA027000	Driver Pin	구동 핀				6	
61	LLB-JD000100	Wick	유심				6	
62	LNB-KC000100	Needle Bar Driving Shaft	바늘대 구동축				6	
63	LLB-JD000100	Wick	유심				6	
64	LLB-JL000200	FELT "A"	아암 헬트(A)				12	
65	PBR-AA010000	Ball Bearing 6800	볼 베어링 6800			○	6	
66	DBS-AA001000	Needle Bar Drive Bearing Bush	바늘대 구동 베어링 부시				6	
67	GP-060949-00	Presser Driving Lever	노루발구동레버				6	
68	DWS-AA008400	Washer (@6)	와셔 (@ 6)			○	12	
69	PWS-CA002700	Spring Washer (@6)	스프링 와셔 (@ 6)			○	12	
70	DSN-AA005601	Stud Nut	스터드 너트			○	12	
71	DSN-AA001600	Nut (11/64" n=40)	너트 (11/64 "n = 40)			○	6	
72	PWS-CA000800	Washer	와셔			○	6	
73	038003001000	Presser Foot Driving Lever Pin (C)	노루발 구동 레버 핀 (C)				12	
74	GP-060950-00	Presser Foot connection link	노루발제어체연결링크				12	
76	GP-060946-01	ARM SIDE COVER A	암 측면 커버 A				6	
77	MO-000069-00	Presser Foot Driving Motor	윗실잡이구동모터				6	
78	GP-060951-00	Presser Foot Driving Motor Bracket	노루발구동모터브라켓				6	
79	PSC-AC011900	Hex. Socket Bolt (M4*L10)	육각구멍 볼트 (M4 * L10)			○	24	
80	PWS-CA000900	Spring Washer	스프링 와셔			○	12	
81	PWS-AA003200	Washer	와셔			○	18	
82	DPL-BC005201	Presser Foot Driving Pin Pulley	노루발구동핀구동폴리 DM				6	
83	PSC-CB004400	Set Screw (M3*L3)	고정 나사 (M3 * L3)			○	12	
84	DWS-AA020902	Presser Foot Driving Pin Washer	노루발 구동 핀 와셔				6	
85	PL-000161-00	Presser Foot Driving Pin Pulley	노루발 구동 핀 폴리				6	
86	PSC-CB005200	Set Screw (M5*L6)	고정 나사 (M5 * L6)			○	12	
87	BE-000389-00	Presser Foot Driving Belt	노루발 구동 벨트				6	
88	LPF-BB000600	PresserFootDrivingPinSensorBracket	노루발 구동 핀 센서 브래킷				6	
89	PSC-BH002000	Truss Bolt (M4*L8)	트러스 볼트 (M4 * L8)			○	6	
90	PSC-AC013500	Bolt(M3xP0.5, L=5)	육각구멍볼이 볼트				6	
91	CL-000402-00	Presser Foot Driving Pin Collar	노루발 핀 카라				6	
92	PN-00089700	Presser Foot Driving Pin	노루발 구동 핀				6	
93	PSC-AC017600	Bolt(M3*L12)	육각구멍볼이 볼트			○	18	
94	DWS-AA020902	Presser Foot Driving Pin Washer	노루발 구동 핀 와셔				6	
95	BD-000534-01	Presser foot sensor B/D	노루발 센서보드				6	
96	GP-034472-01	Presser foot sensor cover	노루발 센서 커버				6	

C

# Arm2 Mechanism

## 암2 관계



Ref. No	Part No.	Part Name	품 명	Applicat iondate	Interchan geability	Hard ware	Q'ty	Re marks
1	AS-017192-09	Lm Guide Block Set	Lm 가이드 블록(조)				6	
2	PSC-AC014300	Hex.Scoket Bolt (M3*L10)	육각구멍 볼트 (M3 * L10)			○	24	
3	LAM-LA000600	ARM TOP COVER	암 상면 커버				6	
4	PSC-BH000600	Truss Screw (M4*L6)	트러스 나사 (M4 * L6)			○	12	
5	LTH-BP000400	Take-Up Guide Rail(M)	실채기 가이드 레일 (M)				5	
6	LTH-BP000300	Take-Up Guide Rail(L)	실채기 가이드 레일 (L)				1	
7	PSC-BH001500	Guide Rail Screw	가이드 레일 나사				24	
8	GP-060137-00	Take-Up Guide Rail B	실채기 가이드 레일 B				1	
9	GP-061049-00	Arm Guard Plate(L)	암방호판(좌)				6	
10	GP-060953-00	Arm Guard Plate(L) Bracket	암방호판(좌) 브라켓				6	
11	DSC-BF019101	Side Cover Screw	사이드 커버 나사				6	
12	LAM-BJ001400	Arm Guard Plate(R)	암방호판(우)				6	
13	DSC-BF019101	Guard Plate Screw	가드 플레이트 나사				6	
14	LAM-CM000700	Thread Holding Lever Ass'y	윗실홀딩레버(조)				6	
15	DSP-AC007900	Lever Spring	윗실홀딩레버복귀스프링				6	
16	DBS-DA033100	Lever Spring Bush.	윗실홀딩레버복귀스프링붓싱				6	
17	LAM-BJ001500	Thread Holding Push Plate	윗실홀딩구동판				6	
18	PSC-AC013500	Hex.Scoket Bolt (M3*L6)	육각구멍 볼트 (M3 * L6)			○	6	
19	PSD-AA000200	UPPER THREAD CATCHER SOL.	윗실잡이솔레노이드				6	
20	PSC-BH003100	Screw(M3xP0.5, L=4)	트러스 작은나사			○	12	
21	PWS-AA001900	Washer (@3)	와셔 (@ 3)			○	12	
22	BAM-PS002500	UPPER THREAD HOLDING SET	윗실홀딩장치(조)				6	
23	MO-000056-00	Jump Motor	점프 모터				6	
24	PSC-AC004100	Plus Screw (M4*L8)	플러스 스크류 (M4 * L8)			○	6	
25	GP-060952-00	Jump Motor Base	점프 모터베이스				6	
26	PSC-AC004900	Hex.Scoket Bolt (M4*L10)	육각구멍 볼트 (M4 * L10)			○	6	
27	PWS-CA000900	Spring Washer (@4)	스프링 와셔 (@ 4)			○	6	
28	PWS-AA003900	Washer (@4)	와셔 (@ 4)			○	12	
29	LJP-BN000100	Jump Crank Stopper	점프 크랭크 스톱퍼				12	
30	DSC-FA022200	Stud for Jump Crank Stopper	납작 단나사(9/64"n=40, D4 x H10)				6	
31	LJP-CB000200	Jump Driving Crank	점프작동크랭크				6	
32	DSC-AC003300	HOLDER SCREW (9/64-L8)	홀더 나사 (9 / 64-L8)			○	6	
33	AS-021532-00	Jump Crank Roller Ass'y	점프크랭크롤러(조)				6	
34	DSN-AA006300	Pin. Nut (11/64,N=40)	핀. 너트 (11 / 64, N = 40)			○	6	
35	DSP-AC008300	Jump Return Spring	점프 리턴 스프링				6	
36	PSC-BD001400	Plus Screw (M3*L5)	플러스 스크류 (M3 * L5)			○	6	
37	PWS-AA001900	Washer (@3)	와셔 (@ 3)			○	6	
38	LJP-BA000400	Jump Clutch Base	점프 클러치 베이스				6	
39	PSC-AC018100	Hex.Scoket Bolt (M3*L8)	육각구멍 볼트 (M3 * L8)			○	6	
40	11019SW-9115	Spring Washer (3@)	스프링 와셔 (3 @)			○	6	
41	PWS-AA001900	Washer (@3)	와셔 (@ 3)			○	6	
42	LJP-BN000200	Jump Clutch Lever Stopper	점프 클러치 레버 스톱퍼				6	
43	PSC-AC004900	Hex.Scoket Bolt (M4*L10)	육각구멍 볼트 (M4 * L10)			○	6	
44	PWS-AA003900	Washer (@3)	와셔 (@ 3)			○	6	
45	LJP-CM000200	Jump Driving Clutch Lever	점프 구동 클러치 레버				6	
46	DSC-GA001501	Stud for Jump Clutch Lever	점프 클러치 레버 용 스테드				6	
47	LJP-CV000100	Jump Driving Clutch	점프 구동 클러치				6	
48	PSC-AC004100	Hex. Socket Bolt (M4*L8)	육각 구멍 볼트 (M4 * L8)			○	6	
49	DSC-FF003800	Jump Clutch Pin	점프 클러치 핀				6	
50	DSP-AD001900	Jump Clutch Plate Spring	점프 클러치 플레이트 스프링				6	

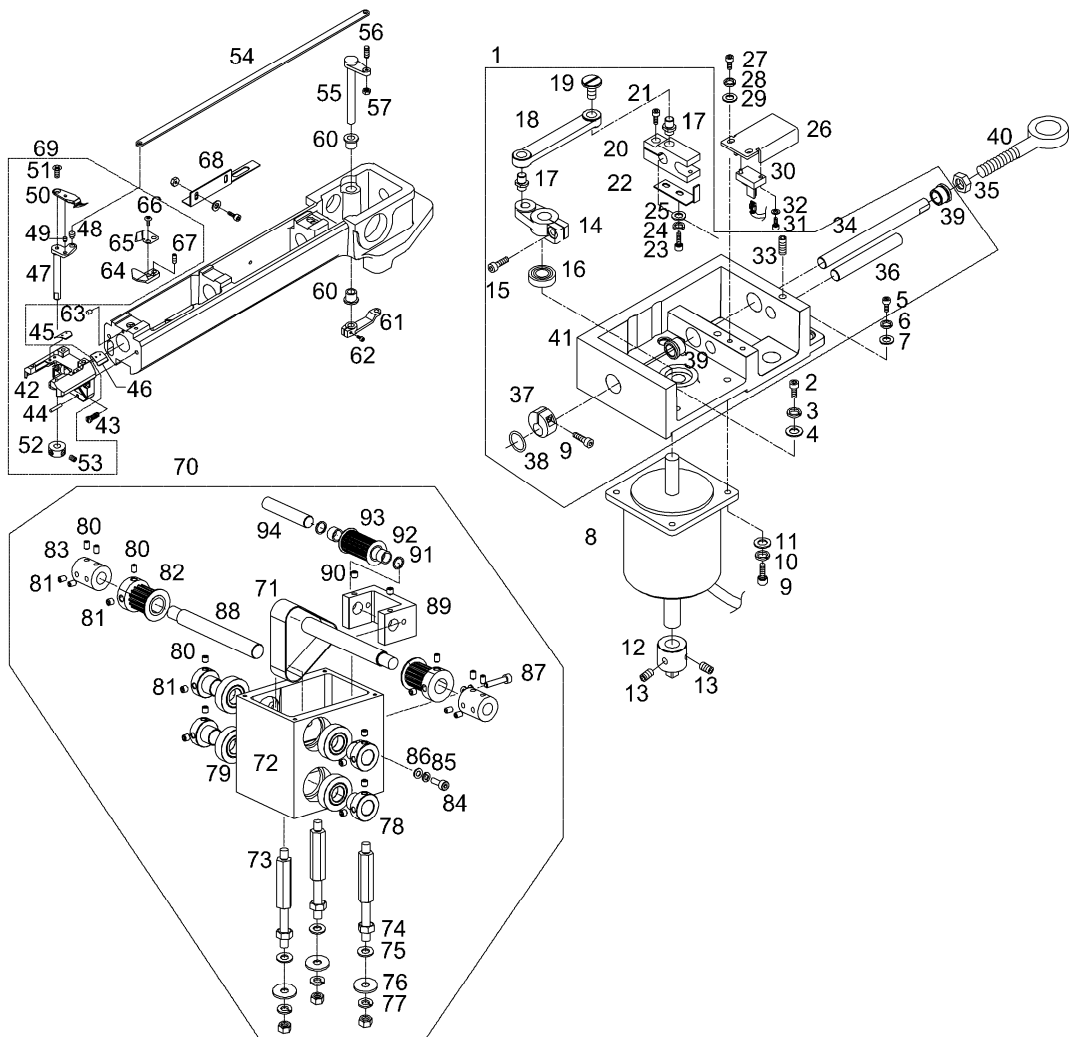
Ref. No	Part No.	Part Name	품 명	Applicat iondate	Interchan geability	Hard ware	Q'ty	Re marks
51	DSC-GA001501	Jump Clutch Lever Stud Bolt	점프수동클러치레버단나사				6	
52	BAM-PS006200	Jump Assy	점핑(조)				6	
53	EP-000537-00	ENCODER SET(RIA-37-1000ZO15T)	엔코더(RIA-37-1000ZO15T)				1	
54	PWS-AA001900	Hex. Socket Bolt(M3xL6)	육각구멍 볼트 (M3xL6)			○	2	
55	PWS-CA002800	Spring Washer (@3)	스프링 와셔 (@ 3)			○	2	
56	PSC-AC007500	Washer (@3)	와셔 (@ 3)			○	2	
57	GP-046496-00	Encoder Base	엔코더 베이스				1	
58	PSC-AC018600	Hex. Socket Bolt(M5xL15)	육각구멍 볼트 (M5xL15)			○	2	
59	PWS-AA004600	Spring Washer (@5)	스프링 와셔 (@ 5)			○	2	
60	PWS-CA000800	Washer (@5)	와셔 (@ 5)			○	2	
61	GP-047474-00	Encoder Bearing Case	엔코더 베어링 케이스				1	
62	04018BR-A001	Bearing(608Z)	베어링 (608Z)				2	
63	ST-000143-00	Encoder Shaft	엔코더 축				1	
64	GP-046493-00	Encoder Shaft Coupling	엔코더 축 커플 링				1	
65	25103ET-B001	Encoder Connector	엔코더 커넥터				1	
66	01303900H000	Oil Distribution Junction	오일분배용정션(PJ-3)				1	
67	PSC-AC023500	Hex.Socket Bolt (M6*L30)	육각구멍 볼트 (M6 * L30)			○	12	
68	PWS-CA002700	Spring Washer (@6)	스프링 와셔 (@ 6)			○	12	
69	DWS-AA008400	Washer (@6)	와셔 (@ 6)			○	12	
70	01303800H000	Hose	호스				1	
71	01300300H000	Oil Pump Hose Insert	오일펌프호스인서트(@4)				27	
72	01300400H000	Oil Pump Compression Sleeve	오일펌프컴프레션슬리브(CS-4)				27	
73	01300500H000	Oil Pump Compression Bushing	오일펌프컴프레션붓싱(CB-4)				27	
74	01302400H000	Stop Valve Adapter Hose (@4)	스톱밸브아답터호스(@4)				2	
75	01302700H000	Mos Metering Valve Junction	MOS정량밸브정션(PVS-5S)				6	
76	01300900H000	Mos Metering Valve	MOS정량밸브(MOS-5)				12	
77	01302000H000	Mos Metering Valve (Mos-1)	MOS정량밸브(MOS-1)				30	
78	01302800HD00	Mos Valve Junction Hose @4	MOS정량밸브정션호스(@4,320)				5	
79	01301300H000	Bed Oil Compression Sleeve	베드급유호스컴프레션슬리브				42	
80	01301400H000	Bed Oil Compression Bushing	베드급유호스컴프레션붓싱@2.4				42	
81	01302900H000	Needle Bar Supply Hose	바늘대급유호스(@2.4*L300)				6	
82	01303600H000	Needle Bar Oil Hose Holder	CABLECLAMP (DA-2N)				6	
83	PSC-AC013500	Hex. Socket Bolt (M3*L5)	육각구멍 볼트 (M3 * L5)			○	16	
84	GP-029277-02	Head Oil Hose Guide	헤드급유호스안내				1	
85	PWS-AA001900	Washer (@3)	와셔 (@ 3)			○	16	
86	01303110H000	Elbow Tube End (E*0.3*2.4)	엘보우 튜브 끝단 (E * 0.3 * 2.4)				6	
87	18033PR-UK01	Oil Tube Guide	암급유호스잡이				5	
88	PSC-AC004100	Hex. Socket Bolt (M4*L8)	육각구멍 볼트 (M4 * L8)			○	10	
89	01301900H000	Close Plug (M8*1.0)	클로즈 플러그(M8*1.0)				4	
90	01303200H000	Take-Up Lever Oil Supply Hose	실채기구동레버호스@2.4*L300				6	
91	LLB-JP000200	Hook Oil Supply Nipple	훅급유니플STRAIGHT TUBE END				18	
92	01303300H000	Needle Bar Driving Shaft Hose	바늘대구동축호스@2.4*L160				6	
93	01302700H000	Mos Metering Valve Junction	MOS정량밸브정션(PVS-5S)				6	
94	01300900H000	Mos Metering Valve	MOS정량밸브(MOS-5)				12	
95	01301000H000	Valve Junction Connect Hose	MOS정량밸브정션연결호스L600				3	
96	PSC-AC017400	Hex. Socket Bolt (M5*L15)	육각구멍 볼트 (M5 * L15)			○	6	
97	PWS-AA001500	Washer (@5)	와셔 (@ 5)			○	6	
98	PSC-AC023200	HEX.SOCKET BOLT (M5*L45)	육각구멍 볼트			○	2	
99	01301100HD00	Bed Oil Supply Hose "A"	베드 오일 공급 호스 "A"				6	
100	01301200HD00	Bed Oil Supply Hose "B"	베드 오일 공급 호스 "B"				6	

Ref. No	Part No.	Part Name	품 명	Applcationdate	Interchangeability	Hard ware	Qty	Re marks
101	01301400H000	Bed Oil Compression Bushing	베드 오일 압축 부싱				42	
102	01302600H000	Stop Valve Adapter	스톱밸브아답터L호스(@4)				1	
103	01302400H000	Stop Valve Adapter Hose (@4)	스톱밸브아답터R호스(@4)				2	
104	01303900H000	Oil Distribution Junction	오일분배용정션(PJ-3)				1	
105	01303800H000	Hose	호스				1	
106	PWS-CA000800	SPRING WASHER (@5)	스프링 와셔 (@ 5)			○	6	
107	PWS-AA004600	WASHER (@5)	와셔 (@ 5)			○	1	
108	01301900H000	Close Plug (M8*1.0)	클로즈 플러그(M8*1.0)				4	
109	GP-050368-00	Oil Pump Set	오일 펌프 세트				1	
110	01300200H000	Oil Pump Adapter	오일 펌프 어댑터				1	
111	01300600H000	Oil Pump Hose (@4)	오일 펌프 호스 (@ 4)				1	
112	15046ET-T121	Wire Holder	와이어 홀더				2	
113	01302210H000	Stop Valve (1/8)	스톱 밸브 (1/8)				1	
114	PSC-AC004400	Hex. Socket Bolt (M4*L25)	육각구멍 볼트 (M4 * L25)			○	4	
115	PWS-AA001000	Washer (4@)	와셔 (4 @)			○	4	
116	01302600H000	Stop Valve Adapter	스톱밸브아답터L호스(@4)				1	
117	01302400H000	Stop Valve Adapter Hose (@4)	스톱밸브아답터R호스(@4)				1	
118	01303500H000	Needle Bar Pin Supply Hose	바늘대 핀 공급 호스				20	

# D

## Thread Cutting Set Mechanism

### 사절 관계



Ref. No	Part No.	Part Name	품 명	Applicat iondate	Interchan geability	Hard ware	Q'ty	Re marks
1	AS-006609-01	MESDRIVING Box Assy	사절구동박스				1	
2	PSC-AC018700	Hex. Socket Bolt (M8*L25)	육각구멍 볼트 (M8 * L25)			○	2	
3	PWS-CA002000	Spring Washer (@8)	스프링 와셔 (@ 8)			○	2	
4	DWS-AA009900	Stud Bolt Washer(S) (@8)	스터드 볼트 와셔(@ 8)			○	2	
5	PSC-AC007200	Hex.Socket Bolt(M6*L25)	육각구멍 볼트 (M6 * L25)			○	1	
6	PWS-CA002700	Spring Washer (@6)	스프링 와셔 (@ 6)			○	1	
7	DWS-AA008400	Washer (@6)	와셔 (@ 6)			○	1	
8	16055MT-UK06	Y-MOTOR(103H8222-5013)	Y-모터 (103H8222-5013)				1	
9	PSC-AC003900	HEX. SOCKET BOLT (M5*L15)	육각구멍 볼트 (M5 * L15)			○	4	
10	PWS-CA000800	Spring Washer (@5)	스프링 와셔 (@ 5)			○	4	
11	PWS-AA001500	Washer (@5)	와셔 (@ 5)			○	4	
12	DTC-AB000300	Motor Driving Nob	모터구동노브(고속)				1	
13	PSC-CB004800	Hex.Socket Screw(M6*L6)	육각구멍 나사 (M6 * L6)			○	2	
14	LTT-CB000100	MES DRIVING CRANK	사절구동크랭크(고속)				1	
15	PSC-AC005800	HEX.SOCKET BOLT (M6*L15)	육각구멍 볼트 (M6 * L15)			○	1	
16	PBR-AA011200	Ball Bearing (6001Z)	볼 베어링 (6001Z)			○	1	
17	DSC-FG003100	Mes Link Pin	사절 링크 핀				2	
18	GP-034383-01	Mes Driving Link	사절 구동 링크				1	
19	DSC-BF019500	Mes Driving Link Screw	사절 구동 링크 나사				1	
20	LTT-BL000100	Mes Shaft Driving Clamp	사절축구동클램프(고속)				1	
21	PSC-AC001300	Hex. Socket Bolt (M5*L20)	육각구멍 볼트 (M5 * L20)			○	1	
22	LTT-BJ000100	Limit Sensor Plate	리미트센서작동판				1	
23	PSC-AC002800	Hex. Socket Bolt (M3*L8)	육각구멍 볼트 (M3 * L8)			○	2	
24	PWS-AA001900	Washer (@3)	와셔 (@ 3)			○	2	
25	PWS-CA001800	Spring Washer (3@)	스프링 와셔 (3 @)			○	2	
26	LTT-BA000200	Limit Sensor Base	리미트 센서베이스				1	
27	PSC-AC007100	Hex.Socket Bolt(M4*L10)	육각구멍 볼트 (M4 * L10)			○	2	
28	PWS-CA000700	Spring Washer (@4)	스프링 와셔 (@ 4)			○	2	
29	DWS-AA022600	Lever Washer	레버 와셔				2	
30	BD-000396-02	SENSOR ASSY TLP1204 (C1)	센서				2	
31	PSC-AC017600	Hex. Socket Bolt (M3*L12)	육각구멍 볼트 (M3 * L12)			○	2	
32	PWS-AA001900	Washer (@3)	와셔 (@ 3)			○	2	
33	PSC-CB004801	Hex.Socket Screw(M6*L6)	육각구멍 나사 (M6 * L6)			○	2	
34	LTT-KC000101	Mes Driving Shaft(@6, L=520)	사절 구동 샤프트 (@ 6, L = 520)				1	
35	PSN-AA001300	Hex.Nut (M6*T5-R)	육각너트 (M6 * T5-R)				1	
36	LTT-KC000200	Mes Driving Shaft Guide	사절 구동 가이드				1	
37	DCL-AC000800	Stopper Collar	스토퍼 칼라				1	
38	DPK-BA000900	O-Ring (@10)	O-링 (@ 10)				1	
39	DBS-DB014400	Mes Driving Shaft Bush	사절 운전 샤프트 부시				1	
40	LTT-KC001900	ROD END BEARING (THK NOS6TR)	ROD END BEARING (THK NOS6TR)				1	
41	LTT-BA000600	Mes Cam Driving Box	사절 캠 드라이빙 박스				1	
42	LHB-BB000402	Needle Plate Bracket	니들 플레이트 브래킷				6	
43	DSC-BJ007200	Picker Bracket Screw(R)	피커 브래킷 나사 (R)				8	
44	PPN-AF003600	Spring Pin	스프링 핀				8	
45	GP-012800-00	Needle Plate Guide(L)	니들 플레이트 가이드 (L)				6	
46	GP-012801-00	Needle Plate Guide(R)	니들 플레이트 가이드 (R)				6	
47	LTT-KZ000100	Moving Mes Shaft	이동메스축A				6	
48	DPN-AD014000	MOVING MES CONNECTING LINK PIN	헤드붙이 핀(3.5x1.9)				6	
49	DPN-AD013900	MES PIN	헤드붙이 핀(2.5x2.5)(메스부착핀)				6	
50	LTT-NA000200	Moving Mes	이동메스				6	

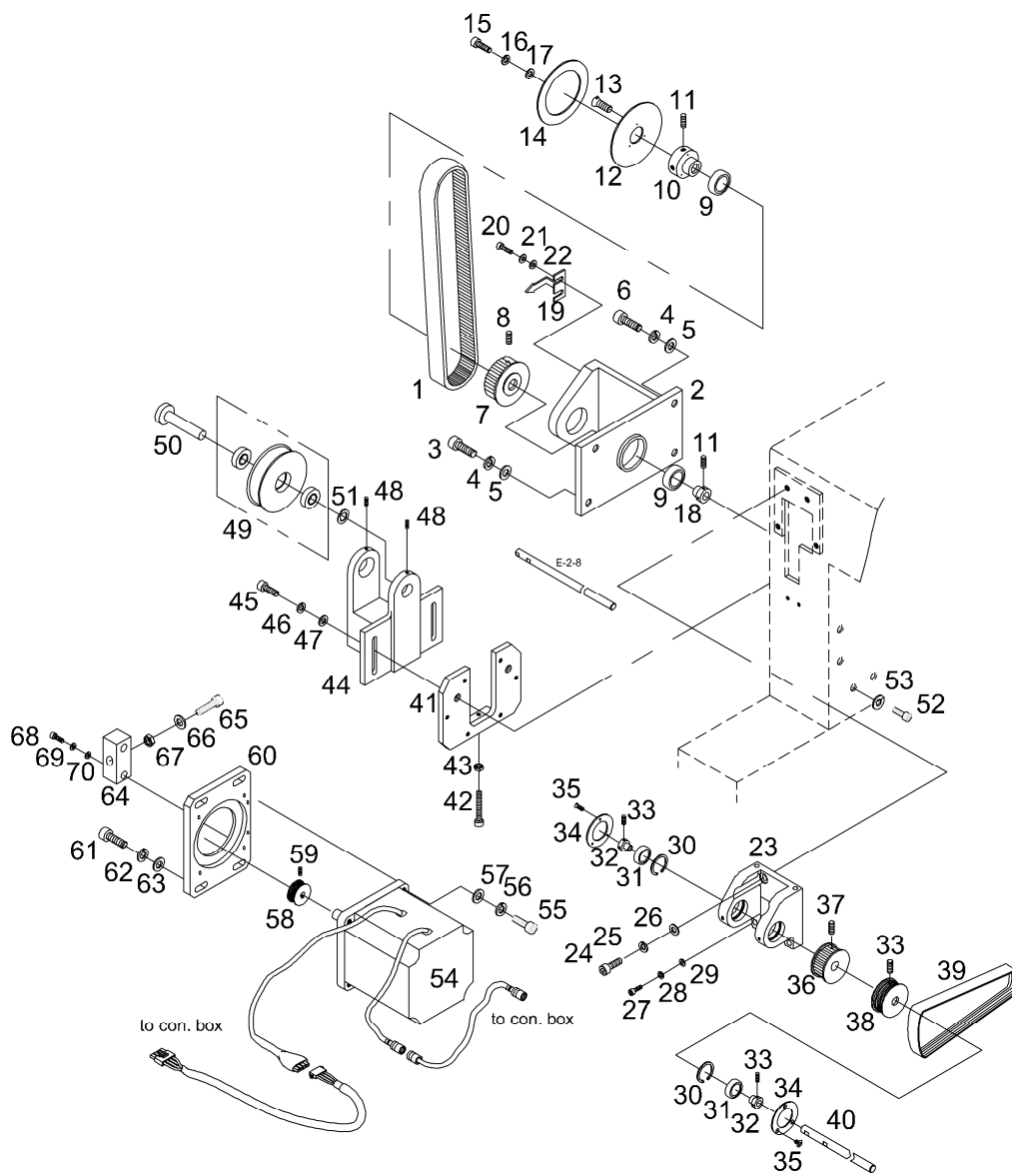


Ref. No	Part No.	Part Name	품 명	Applicat iondate	Interchan geability	Hard ware	Q'ty	Re marks
51	DSC-BB006300	Plus Screw (M3*L8)	플러스 나사 (M3 * L8)			○	6	
52	DCL-AA014900	Mes Shaft Collar	사철 축 카라				6	
53	PSC-CB000600	Hex. Socket Set Screw(M4*L5)	육각구멍 세트 나사 (M4 * L5)			○	12	
54	LTT-CA000300	Mes Connecting Link	이동메스연결링크				6	
55	LTT-KZ000300	Mes Driving Lever Shaft "A"	사철 구동 레버 축 "A"				3	
56	07023CW-T121	Lever Pin "A"	레버 핀 "A"				3	
57	PSN-AA003800	Hex. Nut (M4-No2)	육각 너트 (M4-No2)			○	4	
60	DBS-DB017600	Lever Shaft Bush	사철축붓싱(8x12x12)				12	
61	LTT-CM000400	Mes Driving Lever	사철구동레버				6	
62	PSC-AC007100	Hex.Socket Bolt(M4*L10)	육각구멍 볼트 (M4 * L10)			○	6	
63	32047RB-T121	Oil Rubber Cap	오일 고무 캡				6	
64	LTT-NB000201	Fixed Mes	고정메스				6	
65	LTT-BJ000400	Under Thread Presser	밑살잡이				6	
66	PSC-BD001300	Plus Screw (M3*L8)	플러스 나사 (M3 * L8)			○	6	
67	PSC-CB004400	Hex. Socket Set Screw (M3*L3)	육각구멍 세트 나사 (M3 * L3)			○	12	
68	GP-006670-00	Bed Felt Cover A	베드 펠트 커버 A				1	
69	AS-002024-00	Needle Plate Bracket Ass'y	침판 브라켓(조)				6	
70	AS-021389-00	Pulley Box Ass'y	폴리 박스(조)				1	
71	BE-000387-00	Pulley box drive belt	폴리 박스 구동벨트				1	
72	GP-060440-00	Pulley Box	폴리 박스				1	
73	DSC-HC004700	Hex.Support Screw	육각 지지나사(착색)				3	
74	DSN-AA005500	Hook Base Stem Nut (M8*P1.25)	훅베이스스텝너트(M8*P1.25)				6	
75	DWS-AA009900	flat washer @ 8	작은평와셔@8				3	
76	DWS-AA022700	washer (@ 8)	와셔(@8)				3	
77	PWS-CA002000	Spring washer	스프링와셔(호칭8)				3	
78	DCL-AB005402	BearingBushing@28	하축베어링붓싱@28				4	
79	PBR-AA004100	Ball Bearings (6003ZZR (KBC))	볼 베어링(6003ZZR(KBC))				4	
80	PSC-CB002100	Hex. socket screw (M6xP1, L = 6)	육각구멍볼이머츨나사(M6xP1,L=6)				10	
81	PSC-CB002400	Hex. socket screw (M6xP1, L = 6)	육각구멍볼이머츨나사(M6xP1,L=6)				10	
82	PL-000151-01	Y- Auxiliary Frame Pulley (A)	Y-보조후레임폴리(A)				2	
83	14079CW-UK06	Lower Shaft coupling	하축 커플링				2	
84	PSC-AC003900	Hex. socket bolt (M5xP0.8, L = 15)	육각구멍볼이볼트(M5xP0.8,L=15)				2	
85	PWS-CA000800	Spring washer(@ 5)	스프링 와셔(호칭 5)				3	
86	PWS-AA001500	washer (@5)	원형 평와셔(호칭경 5)				3	
87	PSC-AC024300	Hex. socket bolt (M5xP0.8, L = 25)	육각구멍볼이 볼트(M5xP0.8, L=25)				1	
88	ST-001420-00	Pulley box drive shaft	폴리박스구동축				2	
89	GP-060441-00	Pulley Box Tension Control Bracket	폴리박스장력조절브라켓				1	
90	PSC-CB001900	Hex. socket screw (M5xP0.8, L = 8)	육각구멍볼이 머츨나사(M5xP0.8, L=8)				2	
91	DWS-AA022800	Washer (TW1225) (12.3x25x0.8)	우레탄 와셔(TW1225)(12.3x25x0.8)				2	
92	PBR-BA002000	Needle Bearing (1210 (NTN))	니들 베어링(1210(NTN))				2	
93	PL-000160-00	Pulley box idler pulley	폴리박스아이들러폴리				1	
94	ST-001421-00	Pulley box idler shaft	폴리박스아이들러축				1	

# E

## Main Drive System Mechanism

### 메인 구동 시스템 관계



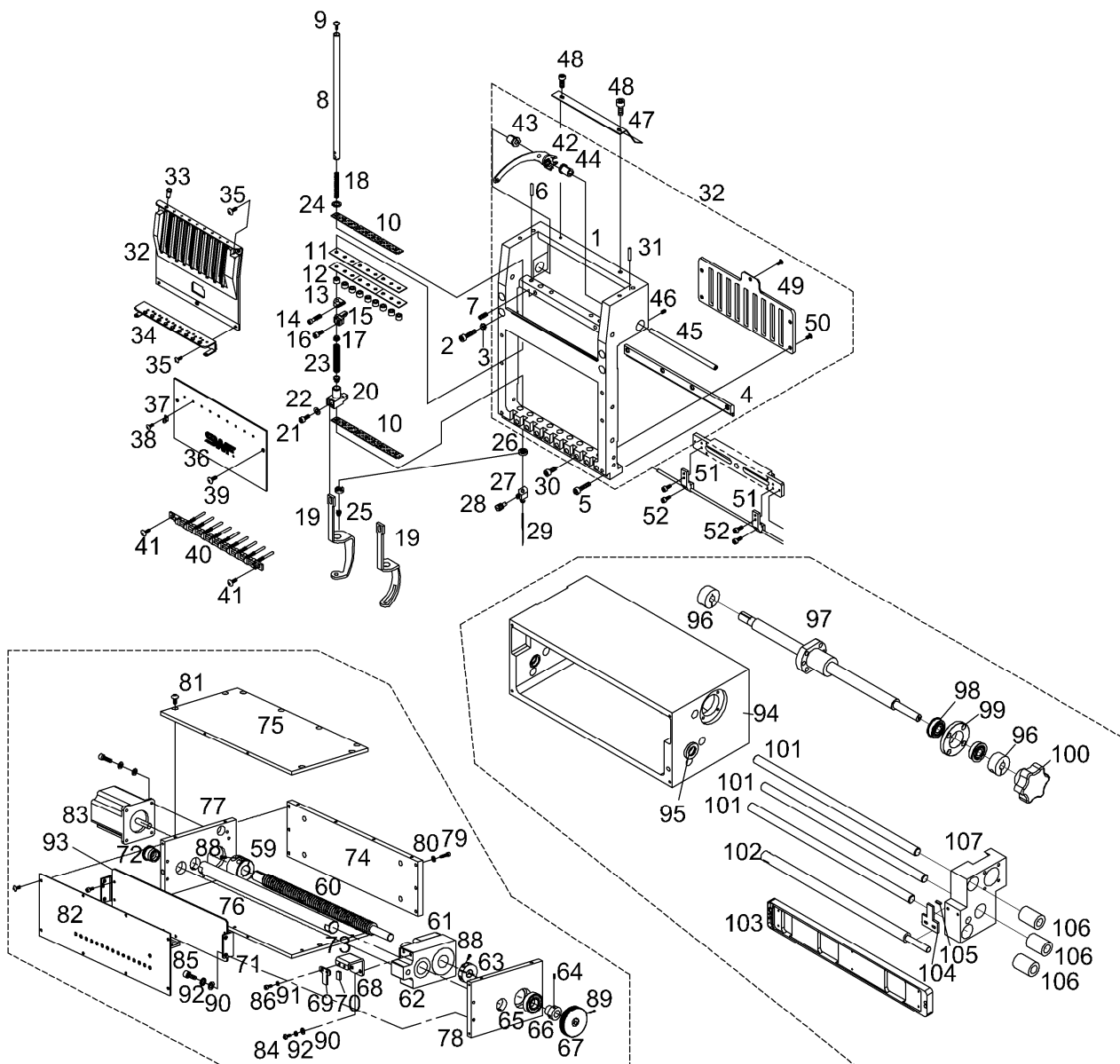
Ref. No	Part No.	Part Name	품 명	Applicat iondate	Interchan geability	Hard ware	Q'ty	Re marks
1	PBT-BC004300	Timing Belt (25XS5MXL1000)	타이밍 벨트 (25XS5MXL1000)				1	
2	03012100U000	Low Shaft Support Bracket	하축 지지 브라켓				1	
3	PSC-AC002000	Hex. Socket Bolt (M6*L20)	육각구멍 볼트 (M6 * L20)			○	2	
4	PWS-CA002700	Spring Washer (@6)	스프링 와셔 (@ 6)			○	4	
5	PWS-AA001400	Washer (@6)	와셔 (@ 6)			○	4	
6	PSC-AC007200	HEX.SOCKET BOLT(M6*L25)	육각구멍 볼트 (M6 * L25)			○	2	
7	DPL-BC008500	Pulley (Tubular)	STD형 타이밍풀리(착색)				1	
8	PSC-CB001400	Hex.Socket Screw(M8*L8)	육각구멍 나사 (M8 * L8)			○	12	
9	PBR-AA011400	Ball Bearing (6004Zz)	볼 베어링 (6004ZZ)			○	2	
10	DCL-AB006300	Collar	베어링부싱 칼라(15x20x25)				1	
11	PSC-CB004801	Hex.Socket Screw(M6*L6)	육각구멍 나사 (M6 * L6)			○	12	
12	LUP-BJ001100	Angle Plate Base	각도판부착베이스				1	
13	PSC-BB002200	Plus Screw(M3*L10)	플러스 나사 (M3 * L10)			○	1	
14	LUP-BJ001200	Angle Disk	각도판-K-UK1204-45				1	
15	PSC-AC013100	Hex.Socket Set Screw(M8*L15)	육각구멍 고정 나사 (M8 * L15)			○	1	
16	PWS-CA002000	Spring Washer (@8)	스프링 와셔 (@ 8)			○	1	
17	DWS-AA009900	STUD BOLT WASHER(S) (@8)	스터드 볼트 와셔(@ 8)			○	1	
18	DCL-AB004500	Collar "A"	카라 "A"				1	
19	LUP-BJ001400	INDICATOR	인디케이터(소두)				1	
20	PSC-AC007100	HEX.SOCKET BOLT(M4*L10)	육각구멍 볼트 (M4 * L10)			○	2	
21	PWS-CA000700	SPRING WASHER (@4)	스프링 와셔 (@ 4)			○	2	
22	PWS-AA001000	Washer (4@)	와셔 (4 @)			○	1	
23	LUP-BB000301	UPPER SHAFT SUPPORT BRACKET	P_상축지지브라켓(좌)				1	
24	PSC-AC008300	HEX.SOCKET BOLT (M8*L25)	육각 구멍 볼트 (M8*L25)			○	2	
25	PWS-CA002000	SPRING WASHER (@8)	스프링 와셔 (@ 8)			○	2	
26	DWS-AA009900	WASHER (@8-S)	와셔 (@ 8-S)			○	2	
27	PSC-AC023500	HEX.SOCKET BOLT (M6*L30)	육각구멍 볼트 (M6 * L30)			○	2	
28	PWS-CA002700	Spring Washer (@6)	스프링 와셔 (@ 6)			○	2	
29	PWS-AA001400	WASHER (@6)	와셔 (@ 6)			○	2	
30	PSR-AB001600	C-Ring (@47)	C- 링 (@ 47)			○	2	
31	PBR-AA009900	Ball Bearing (6005Zz)	볼 베어링 (6005ZZ)			○	2	
32	DCL-AB004500	Collar "A"	카라 "A"				2	
33	PSC-CB004801	Hex.Socket Screw(M6*L6)	육각구멍 나사 (M6 * L6)			○	6	
34	LUP-LB000400	Upper Shaft Support Cover	상축지지브라켓베어링커버				2	
35	PSC-AC002800	HEX.SOCKET BOLT (M3*L8)	육각 구멍 볼트 (M3 * L8)			○	6	
36	DPL-BC008600	Pulley (Tubular)	STD형 타이밍풀리(착색)				1	
37	PSC-CB001400	Hex.Socket Screw(M8*L8)	육각구멍 나사 (M8 * L8)			○	2	
38	DPL-AH000700	TOP SHAFT PULLEY	Ribstar 벨트 풀리				1	
39	PBT-AH000100	MAIN DRIVING BELT 290*10R	메인 구동 벨트				1	
40	ST-001389-00	Top Shaft (L1298) (UK1202)	상축				1	
41	LUP-BK000100	Idelr Plate	아이들러 장력조절블럭				1	
42	14063SC-A001	Tension Control Bolt (M6*L40)	장력조절 볼트			○	2	
43	13042SN-1111	Hex.Nut (M6*T5-R)	육각너트 (M6 * T5-R)			○	2	
44	LUP-BB000200	Idler Support Bracket	아이들러지지브라켓(신형)				1	
45	PSC-AC008800	Hex.Socket Bolt (M8*L30)	육각구멍 볼트 (M8 * L30)			○	2	
46	PWS-CA002000	Spring Washer (@8)	스프링 와셔 (@ 8)			○	2	
47	PWS-AA004700	Washer (@8-S)	와셔 (@ 8-S)			○	2	
48	PSC-CB004801	HEX.SOCKET SCREW(M6*L6)	육각구멍 나사 (M6 * L6)			○	2	
49	LUP-CG000100	Idler	아이들러(@80*32)				1	
	13026BR-T121	Needle Bearing (6002Z)	니들 베어링 (6002Z)			○	2	



# F

## Head & Color Change Mechanism

### 헤드 & 칼라 체인지 관계



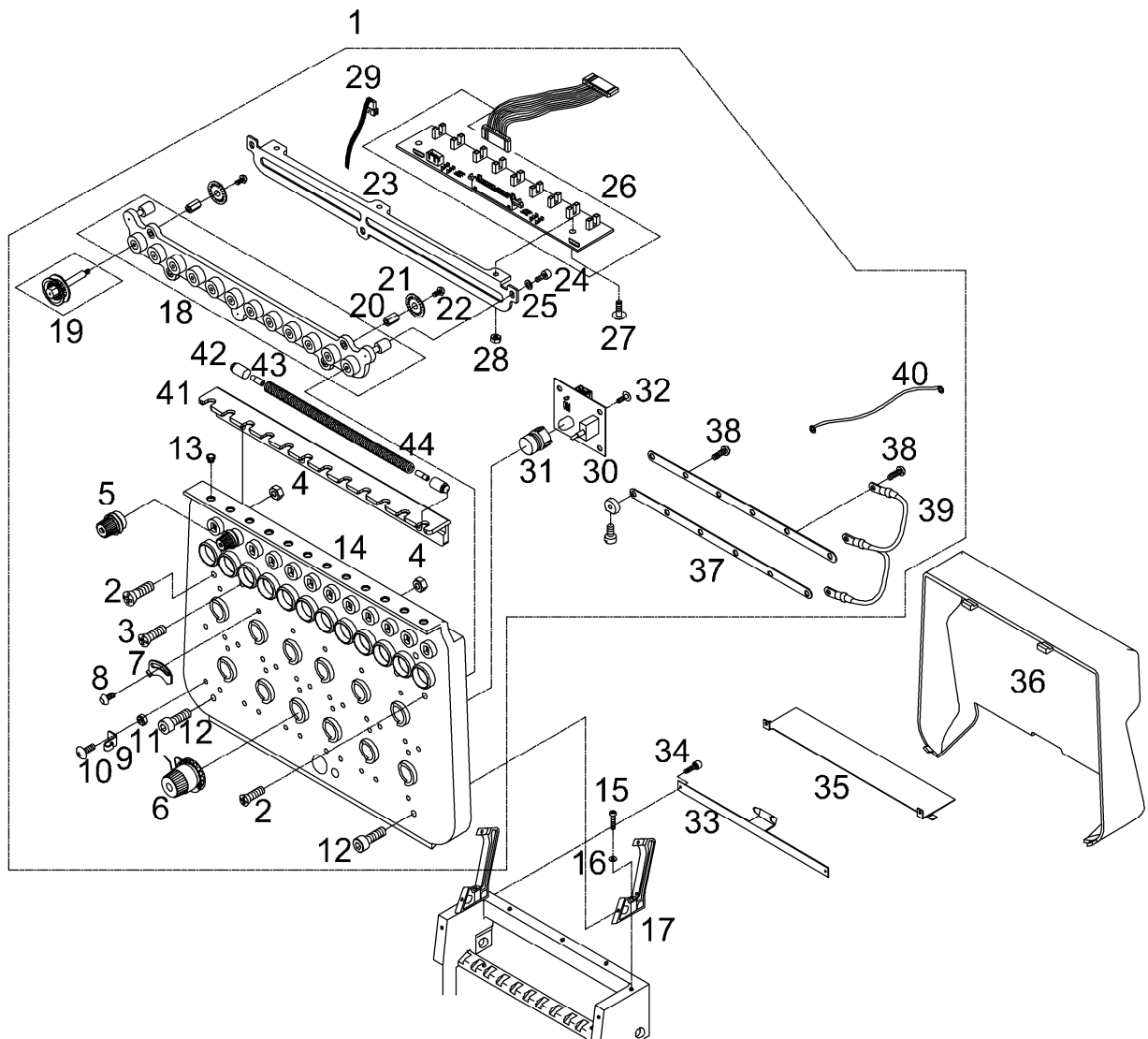
Ref. No	Part No.	Part Name	품 명	Applicat iondate	Interchan geability	Hard ware	Q'ty	Re marks
1	GP-007356-06	Head (6C)	헤드 (6C)				6	
	GP-011947-05	Head (9C)	헤드 (9C)					
	GP-014937-05	Head (12C)	헤드 (12C)					
	GP-007334-08	Head (15C)	헤드 (15C)					
2	PSC-AC017000	Hex.Socket Bolt (M4*L16)	육각구멍볼이 볼트 (M4 * L16)			○	24	
3	PWS-AA003900	Washer (@4)	와셔 (@ 4)			○	24	
4	LHD-BP000500	Head Rail (9C)	헤드 레일 (9C)				6	
	LHD-BP002200	Head Rail (12C)	헤드 레일 (12C)					
5	DSC-AC003500	Hex. Socket Bolt (M4*L23)	육각구멍볼이 볼트 (M4 * L23)			○	12	
6	DPN-AA018600	Head Base Pin(@5*L15)	헤드베이스 핀 (@ 5 * L15)			○	12	
7	PSC-CB000600	Hex. Socket Set Screw(M4*L5)	육각구멍볼이 나사 (M4 * L5)			○	12	
8	LNB-KA000101	Needle Bar	바늘대				90	
9	PSC-BH001700	Needle Bar Cover Screw (M5*L6)	바늘 덮개 나사 (M5 * L6)				90	
10	05021SF-A001	FELT	펠트				90	
11	LNB-BJ000100	Needle Bar Cushion Rubber "A"	바늘대 쿠션 고무 "A"				90	
12	LNB-BN000200	Needle Bar Cushion Rubber "B"	바늘대 쿠션 고무 "B"				90	
13	LNB-BB000200	Upper Dead Point Stopper	상사 중심 스토퍼				90	
14	DSC-AC003200	Stopper Screw (9/64-11.5)	스토퍼 나사 (9 / 64-115)				90	
15	LNB-BF000100	Needle Bar Holder	바늘대 잡이				90	
16	DSC-AC003300	Holder Screw (9/64-L8)	바늘대잡이첨나사				90	
17	LPF-BN000200	Presser Foot Spring Guide	노루발 스프링 가이드				180	
18	DSP-AA014100	Needle Bar Return Spring	바늘대 리턴 스프링				90	
19	LPF-GC000100	PRESSER FOOT	노루발				90	
	LPF-GC000200	PRESSERFOOT(L) (OPTION)	노루발 (옵션)				90	
20	LPF-BF000100	Presser Foot Holder A'ssy	노루발 홀더(조)				90	
21	DSC-BF016800	Presser Foot Screw	노루발홀더첨나사				90	
22	DWS-AA004800	PRESSER FOOT HOLDER WASHER	노루발홀더와셔				90	
23	DSP-AA013800	PRESSER FOOT PRESSURE SPRING	노루발압력스프링				90	
	GP-037364-00	PRESSER FOOT PRESSURE SPRING	후물용노루발압력스프링				90	Option
24	DWS-AA020300	SPRING SHOE WASHER	바늘대휠트보호와셔				90	
25	DBS-DB011000	PRESSER FOOT GUIDE BUSH	노루발안내붓싱				90	
26	LPF-FA000100	Presser Foot Cushion Rubber A	노루발 쿠션 고무 A				90	
27	BNB-PS000600	Needle Fixed Holder Set	바늘 고정 홀더(조)				90	
28	DSC-FF003700	Needle Fixed Screw (A/S)	바늘 고정 나사				90	
29	PTC-CA001300	Needle (Db-K5, #11)	바늘 (Db-K5, # 11)			○	90	
30	DSC-AC003500	Hex.Socket Bolt(M4)	헤드레일첨나사			○	12	
31	DPN-AA018700	TENSION PLATE PIN	실장력조절판부착핀				12	
32	AS-005408-04	Head Assy	헤드(조)				6	
33	LHD-BJ000300	Head Face Plate (U) 9C	헤드면판(상)				6	
34	DBS-DB011300	Thread Guide Bush "A-1"	실안내붓싱				90	
35	10300002A000	ThreadGuide(M)Set (6C)	실안내-중(조) (6C)				6	
	BHD-PS004000	ThreadGuide(M)Set (9C)	실안내-중(조) (9C)					
	10300004A000	ThreadGuide(M)Set (12C)	실안내-중(조) (12C)					
	10300005A000	ThreadGuide(M)Set (15C)	실안내-중(조) (15C)					
36	DSC-BC001500	Thread Guide (M) Screw (9/64 n=40)	실안내(하)첨나사				12	
37	PSC-BH001800	Head Face Plate (U) Screw	나사(9/64",N=40,L10)				24	
38	LHD-BJ001500	Head Face Plate(L)	헤드면판(하)				6	
39	LHD-HK000100	Thread Guide	윗실가이드				90	
40	DSC-BH000300	Truss Bolt (M3*L5)	램프스위치보드첨나사			○	90	
41	PSC-BH001800	HEAD FACE PLATE (U) SCREW	나사(9/64",N=40,L10)				12	
42	BTP-PS000500	Thread Holding Device A'ssy	윗실홀더베이스(조)				6	

Ref. No	Part No.	Part Name	품 명	Applicat iondate	Interchan geability	Hard ware	Q'ty	Re marks
43	PSC-BH001800	Truss Bolt 9/64 n=40	나사(9/64",N=40,L10)				12	
44	BTH-PS000400	Take-Up Lever Set	실채기(조)				90	
45	DBS-DB010500	Take-Up Lever Shaft Bush(L)	실채기축붓싱(좌)				6	
46	DBS-DB010600	Take-Up Lever Shaft Bush(R)	실채기축붓싱(우)				6	
47	LTH-KC000100	Take-Up Lever Shaft (9C)	실채기축				6	
48	PSC-CB002300	Hex. Socket Bolt(M5*L6)	실채기축붓싱고정나사			○	12	
49	LHD-BJ000500	Cable Support "B"	케이블받침B				6	
50	PSC-AC004100	Hex.Socket Bolt(M4*L5)	상축커버A짐나사				12	
51	GP-008539-00	Needle Bar Guide Rail (6C)	바늘 가이드 레일 (6C)				6	
	LHD-BP000600	Needle Bar Guide Rail (9C)	바늘 가이드 레일 (9C)					
	LHD-BP002300	Needle Bar Guide Rail (12C)	바늘 가이드 레일 (12C)					
52	PSC-BH001500	Bolt (9/64 n=40)	바늘대안내레일짐나사				30	
53	LCC-BB000100	Color Change Bracket "B"	칼라체인지브라켓				12	
54	PSC-AC007100	Hex.Socket Bolt(M4*L8)	상축커버(좌)짐나사B			○	24	
59	CL-000396-01	Color Change Motor Collar	칼라체인지모터카라	~ 19.06.31			1	
60	GP-059948-02	Color Change Ball Screw	칼라체인지볼스크류	~ 19.06.31			1	
61	GP-059950-00	Colorchangeballbush	칼라체인지볼부쉬	~ 19.06.31			1	
62	GP-059943-02	Color Change Block	칼라체인지블럭	~ 19.06.31			1	
63	CL-000397-00	Color Change Ball Screw Color	칼라체인지볼스크류카라	~ 19.06.31			1	
64	DSC-CB003200	Hex.socket screw	육각구멍볼이멈춤나사(15/64",n=28,L=6)	~ 19.06.31			2	
65	PBR-AA003200	ball bearing (6002Z)	볼베어링(6002Z)	~ 19.06.31			1	
66	DCL-AB002900	Y-Frame Bearing Color (12x15x20)	Y이송프레임베어링카라(12x15x20)	~ 19.06.31			1	
67	GP-059947-01	Color change knob	칼라체인지수동노브	~ 19.06.31			1	
68	GP-060325-00	Magnet holder bracket	마그넷홀더브라켓	~ 19.06.31			1	
69	GP-060324-00	Magnet Holder	마그넷홀더	~ 19.06.31			1	
70	PTC-AK000300	Magnets	자석(폐달용)	~ 19.06.31			1	
71	GP-060326-00	Color Change Sensor Board Bracket	칼라체인지센서보드브라켓	~ 19.06.31			3	
72	DBS-DB019600	Flanged bushing (14x20x17)	플렌지형부싱(14x20x17)	~ 19.06.31			1	
73	ST-001382-01	Color change guide shaft	칼라체인지가이드축(15C)	~ 19.06.31			1	
74	GP-059938-01	Color change box base	칼라체인지박스 베이스	~ 19.06.31			1	
75	GP-059939-02	Color change box (Upper)	칼라체인지박스(상)	~ 19.06.31			1	
76	GP-059940-02	Color change box (Bottom)	칼라체인지박스(하)	~ 19.06.31			1	
77	GP-059941-02	Color change box (Left)	칼라체인지박스(좌)	~ 19.06.31			1	
78	GP-059942-02	Color Change Box (Right)	칼라체인지박스(우)	~ 19.06.31			1	
79	PSC-AC004900	Hex.Socket Cap Screws	육각구멍볼이 볼트	~ 19.06.31			6	
80	PWS-CA000900	spring washer	스프링와셔	~ 19.06.31			6	
81	SC-002074-00	bolt	접시머리렌치볼트(M4xP0.7,L12)	~ 19.06.31			16	
82	GP-059951-02	cover	커버	~ 19.06.31			1	
	GP-059951-03			19.07.01 ~				
83	STMO1-000018	Stepping motor	스텝핑 모터	~ 19.06.31			1	
84	PSC-AC006700	Hex.socket bolt (M4xP0.7,L=15)	육각구멍볼이볼트(M4xP0.7,L=15)	~ 19.06.31			5	
85	PSC-AC007100	Hex.socket bolt (M4xP0.L=10)	육각구멍볼이볼트(M4xP0.7,L=10)	~ 19.06.31			8	
86	PSC-AC007500	Hex.socket bolt (M3xP0.5,L=6)	육각구멍볼이볼트(M3xP0.5,L=6)	~ 19.06.31			8	
87	PSC-AC019200	Hex.socket bolt (M5xP0.8,L=15)	육각구멍볼이볼트(M5xP0.8,L=15)	~ 19.06.31			10	
88	PSC-CB001900	Hex.socket screw (M5xP0.8,L=8)	육각구멍볼이멈춤나사(M5xP0.8,L=8)	~ 19.06.31			3	
89	PSC-CB003500	Hex.socket screw (M5xP0.8,L=6)	육각구멍볼이멈춤나사(M5xP0.8,L=6)	~ 19.06.31			4	
90	PWS-AA001000	Washer (@4)	원형평와셔(호칭경4)	~ 19.06.31			12	
91	PWS-AA001900	Washer (@3)	원형평와셔(호칭경3)	~ 19.06.31			8	
92	PWS-CA000900	Spring washer (@4)	스프링와셔(호칭4)	~ 19.06.31			12	
93	BD-001817-00	UNIT REV00 (LVDS_TRANSMIT)	바늘 위치 보드	~ 19.06.31			1	

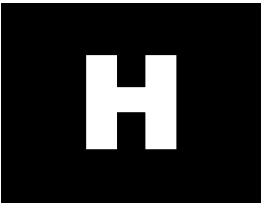




## Thread Tension Unit Mechanism 실 장력 장치 관계

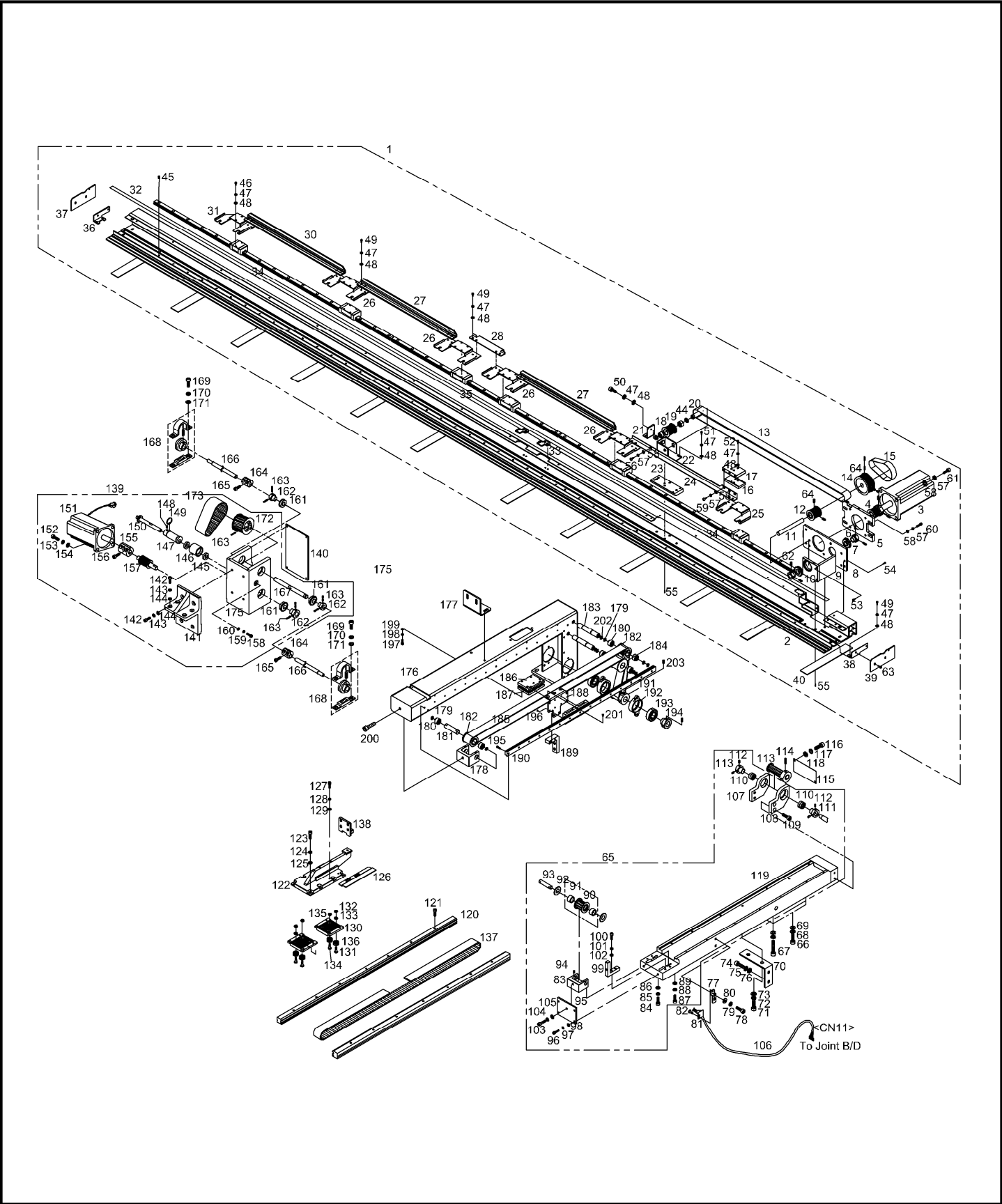


Ref. No	Part No.	Part Name	품 명	Applicat iondate	Interchan geability	Hard ware	Q'ty	Re marks
1	AS-021361-00	TENSION UNIT PLATE Assy	윗실장력조절판(조)15C				6	
2	PSC-BB003000	Screw (M4*L10)	접시 작은나사(M4xP0.7,L=10)			○	12	
3	PSC-BB002100	PlusScrew (M4*L8)	접시나사(M4XL8)			○	30	
4	DSN-AA001600	Pin.Nut (11/64,N=40)	핀너트(11/64, N40)				90	
5	BTA-PS000300	SUB TENSION ADJUSTING SET	보조실조절장치(조)				90	
6	BTA-PS001200	TENSION ADJUSTING SET	실장력조절장치(조)				90	
7	LTA-BJ000500	Thread Breakage Detecting Plat	실감지판				90	
8	DSC-BH000300	Truss Screw (M3*L6)	참나사(M3XL6 트러스)			○	90	
9	LHD-HK000100	Thread Guide	윗실가이드				90	
10	DSC-BH000300	Truss Screw (M3*L6)	참나사(M3XL6 트러스)			○	90	
11	PSN-AA005800	Hex.Nut (M3-No2)	윗실가이드참너트(M3)			○	90	
12	PSC-AC011900	Hex.Socket Bolt (M4*L10)	육각구멍볼이 볼트			○	12	
13	DBS-DB002400	EYELET "A"	플렌지형 부상A				90	
14	LTA-BJ001300	TENSION UNIT PLATE (15C)	실장력조절판15C				6	
15	PWS-AA001000	Washer (@4-L)	원형 평와셔(호칭경 4)			○	12	
16	PSC-AC005000	Hex. Socket Bolt (M4*L20)	육각구멍볼이 볼트(M4xP0.7, L=20)			○	12	
17	LTA-BF000100	Tension Adjusting Plate HOLDER (15C)	실장력판홀더				12	
18	BTA-PS003500	Roller Base	로울러베이스 15C				6	
19	LTA-CL000101	Thread Sensor Roller(B1)Set (15C)	실감지로울러(B1)조				90	
20	DSN-CG000700	Thread Detecting Wheel Stud(15C)	실감지휠스터드 (L=7.5)				60	
21	GP-005179-01	THREAD BREAKAGE DETECTING WHEEL	실감지휠				90	
22	PSC-BA001100	Screw (M2*L4)	밑실잡이참나사(M2XL4)				90	
23	LTA-BA000900	BOARD BASE (15C)	보드 베이스 15C				6	
24	PSC-AC004100	Hex.Socket Bolt (M4*L8)	참나사(M4XL8-렌치)			○	18	
25	PWS-AA003900	Washer (@4)	평와셔(호칭경4)			○	18	
26	BD-001865-00	WHEEL SENSOR BOARD (15C)	WHEEL REV01 (SDM-15C)				6	
27	PSC-BH001100	Truss Screw (M4*L8)	참나사(M4XL8-트러스)			○	18	
28	PSN-AA002300	Hex.Nut (M4)	코드바고정판너트(M4)			○	18	
29	CA-006789-01	Plate Led S/W Board Cable	WHEEL보드 to HEAD SWITCH보드 5PIN				6	
30	BD-001840-02	Head On/Off S/W Board 9C,15C	EMB-SW-H REV03 (SDM-9,15C)				6	
31	GP-060345-00	Lamp Cover	램프커버(반투명)				6	
32	DSC-BH000300	Truss Screw (M3*L6)	참나사(M3XL6 트러스)			○	48	
33	11032PR-T151	Cable Supporter 15C	케이블받침(15C)				6	
34	PSC-AC004100	Hex. Socket Bolt (M4*L8)	참나사(M4XL8-렌치)			○	12	
35	LTA-BJ001400	Cover Plate 15C	P_케이블받침A(15C)				6	
36	LTA-LA000600	TENSION PLATE COVER (15C)	실장력조절판커버15C				6	
37	083003051000	CONNECTION PLATE "A" (15C)	인서트붓싱연결판A-15C				6	
	083004051000	CONNECTION PLATE "B" (15C)	인서트붓싱연결판B-15C				6	
38	DSC-BH000300	Truss Screw (M3*L6)	트러스 작은나사(M3xP0.5, L=6)			○	48	
39	MH-31	Wheel B/D grounding cable-(15COLOR)	휠보드접지케이블-(15COLOR)				3	
40	25124EL-B001	Tension Plat Earth Cable 15C	휠장력조절판EARTH선				6	
41	GP-006744-01	Thread guide tube base (12C)	실안내 튜브 베이스(12C)				6	
	GP-006745-02	Thread guide tube base (15C)	실안내 튜브 베이스(12C)					
42	GP-041886-01	Thread guide tube end	실안내 튜브 엔드				180	
43	GP-061150-00	Thread guide tube eyelet	실안내 튜브 아일릿				180	
44	AS-015582-00	Thread guide tube (L230)	실안내 튜브(L230)			~ 19.08.12	90	
	AS-011040-00	Thread guide tube (L250)	실안내 튜브(L250)					
	GP-061152-01	Thread guide tube	실안내 튜브			19.08.13 ~		



# X-Y Drive Mechanism

## X-Y 구동 관계



Ref. No	Part No.	Part Name	품 명	Applicat iondate	Interchan geability	Hard ware	Qty	Re marks
1	AS-021300-01	X-frame(Set)	X-후레임(조)				1	
2	GP-060050-02	X-Frame	X-후레임				1	
3	DMPD3-000003	750W XY-DIRECT MOTOR D-KUT	750W XY-DIRECT MOTOR D-KUT				1	
4	PL-000155-00	X-motor pulley	X-모터풀리				1	
5	GP-060054-01	X-motor mounting plate	X-모터부착판				1	
6	CL-000398-00	X-driven pulley shaft	X-종동풀리축카라				2	
7	BR-000081-00	Tape driven pulley bearings (6902NR)	테이프구동풀리베어링(6902NR)				2	
8	GP-060051-01	X-pulley box (A)	X-풀리박스(A)				1	
9	GP-060052-01	X-pulley box (B)	X-풀리박스(B)				1	
10	GP-060053-01	X-pulley box (C)	X-풀리박스(C)				1	
11	ST-001394-01	X-driven pulley shaft	X-종동풀리축				1	
12	PL-000157-01	X-driven pulley (B)	X-종동풀리(B)				1	
13	BE-000384-00	Timing Belt_S5M_ Width 25mm	타이밍벨트_S5M_폭25mm				1	
14	PL-000156-00	X-driven pulley (A)	X-종동풀리(A)				1	
15	BE-000385-00	X-Motor Belt (20 S5M 255)	X-모터벨트(20 S5M 255)				1	
16	GP-060125-01	X-conveying belt bracket	X-이송벨트브라켓				1	
17	GP-060126-01	X-conveying belt fixing plate	X-이송벨트고정판				1	
18	PL-000158-01	X-driven pulley (C)	X-종동풀리(C)				1	
19	PBR-BA002000	Needle Bearing 1210 (NTN)	니들 베어링(1210(NTN))				2	
20	PN-000894-01	X-driven pulley pin	X-종동풀리핀				1	
21	GP-060055-01	X-tension control bracket	X-장력조절브라켓				1	
22	GP-060056-01	X-driven pulley bracket	X-종동풀리브라켓				1	
23	GP-060295-00	X-driven pulley bracket base	X-종동풀리브라켓베이스				1	
24	GP-060057-01	LM block connection plate (right)	LM블럭연결판(우)				1	
25	LXF-BJ002900	Hoop Conneting Plate(R)	수테연결판(우)				1	
26	LXF-BJ003400	Hoop Conneting Plate	수테연결판				4	
27	GP-060276-00	LM block connection plate	LM블럭연결판				2	
28	03201200UH00	X-sensor detection plate	X이송센서감지판				1	
30	GP-060275-00	LM block connection plate (left)	LM블럭연결판(좌)				1	
31	LXF-BJ002800	Hoop Conneting Plate(L)	수테연결판(좌)				1	
32	GP-060344-00	Tubular frame rail plate	튜블라후레임레일판				1	
33	LXF-BB002600	X-Sensor Bracket	X이송센서브라켓				2	
34	PBR-FB002400	LM guide rail	LM가이드레일				2	
35	PBR-FB002500	LM guide rail (MSB15S2SS + 690LU)	LM가이드레일				1	
36	LXF-BG000100	X-Frame side cover holder (L)	X후레임측면커버홀더(좌)				1	
37	LXF-LB000500	X-frame side cover (L)	X축후레임측면커버(좌)				1	
38	LXF-BG000200	X-Frame Side Cover Holder (R)	X후레임측면커버홀더(우)				1	
39	LXF-LB000600	X-frame side cover (R)	X축후레임측면커버(우)				1	
40	GP-005585-00	X-frame felt (190*30*1.5T)	X축후레임felt(190*30*1.5T)				12	
41	15112EL-UK01	CODE PUSH (6NR-16, DA-6N)	CODE PUSH (6NR-16,DA-6N)				2	
42	23019EL-A001	CODE PUSH (6NF-16)	CODE PUSH (6NF-16)				2	
43	BD-001872-00	UNIT REV00 (X-SENSOR)	UNIT REV00 (X-SENSOR)				2	
44	DWS-AA022800	Urethane Washer (TW1225)	우레탄 와셔(TW1225)(12.3x25x0.8)				2	
45	PSC-AC002800	Hex.socket bolt (M3xP0.5,L=8)	육각구멍볼이볼트(M3xP0.5,L=8)				46	
46	PSC-AC007100	Hex.socket bolt (M4xP0.7,L=10)	육각구멍볼이 볼트(M4xP0.7,L=10)				20	
47	PWS-CA000900	Spring washer (@4)	스프링 와셔(호칭 4)				54	
48	PWS-AA001000	Washer (@4)	원형 평와셔(호칭경 4)				54	
49	PSC-AC004100	Hex.socket bolt (M4xP0.7, L=8)	육각구멍볼이 볼트(M4xP0.7,L=8)				24	
50	PSC-AC020600	Hex.socket bolt (M4xP0.7, L=20)	육각구멍볼이 볼트(M4xP0.7, L=20)				1	
50	PSR-AC000300	E-Ring	E형 멈춤링				1	

Ref. No	Part No.	Part Name	품 명	Applicat iondate	Interchan geability	Hard ware	Q'ty	Re marks
51	PSC-AC004900	Hex.socket bolt (M4xP0.7, L=12)	육각구멍볼이볼트(M4xP0.7,L=12)				5	
52	PSC-BH000700	Truss screw (M4xP0.7, L=10)	트러스 작은나사(M4xP0.7,L=10)				4	
53	PSC-AC009400	Screw (M4XL15)	나사(M4XL15)				4	
54	SC-002075-00	bolt (M4xP0.7, L8)	접시머리렌치볼트(M4xP0.7,L8)				5	
55	SC-002073-00	bolt (M5xP0.8, L10)	접시머리렌치볼트(M5xP0.8,L10)				7	
56	PSC-AC014600	Screw (M5XL10)	나사(M5XL10)				1	
57	PWS-CA000800	Spring washer (@5)	스프링 와셔(호칭 5)				12	
58	PWS-AA001500	washer (@5)	원형 평와셔(호칭경 5)				12	
59	22033SC-7134	Screw (M5XL12)	나사(M5XL12)				3	
60	PSC-AC006100	Screw (M5XL15)	나사(M5XL15)				4	
61	PSC-AC015800	Screw (M5XL20)	나사(M5XL20)					
62	PSC-CB000300	Hex.socket screw (M5xP0.8, L=g5)	육각구멍볼이 멈춤나사(M5xP0.8, L=5)				4	
63	PSC-BH000600	Screw (M4XL6)	나사(M4XL6)				4	
64	PSC-CB004800	Screw (M6XL6)	나사(M6XL6-무두렌치)				4	
65	AS-021296-00	Y-Frame Assy	Y후레임(조)				2	
66	PSC-AC008800	Hex.Socket Bolt (M8*L30)	빔지지대침나사(M8XL30)				4	
67	PSC-AC007700	Hex. Socket Bolt "B"(M8*L35)	아암침나사B(M8XL35 렌치)			○	4	
68	PWS-CA002000	Spring Washer (@8)	스프링와셔(@8)			○	8	
69	DWS-AA009900	Stud Bolt Washer(S) (@8)	작은평와셔@8			○	8	
70	LYF-BJ002001	Y-Lm Support Fixing Plate	Y축LM받침고정판				2	
71	PSC-AC005800	Hex.Socket Bolt (M6*L15)	육각구멍볼이 볼트(M6xP1, L=15)			○	4	
72	PWS-CA001000	Spring Washer (@6)	스프링와셔(호칭경6)			○	4	
73	PWS-AA001400	Washer (@6)	원형 평와셔(호칭경 6)			○	4	
74	PSC-AC017400	Hex. Socket Bolt (M5*L15)	상축베어링카라침나사			○	4	
75	PWS-CA000800	Spring Washer (@5)	스프링 와셔(호칭 5)			○	4	
76	PWS-AA004600	Washer (@5)	평와셔(호칭경5)			○	4	
77	LYF-BB003400	Sensor Bracket	Y이송센서 브라켓				1	
78	PSC-AC007100	Hex.Socket Bolt(M4*L10)	육각구멍볼이 볼트(M4xP0.7,L=10)			○	2	
79	PWS-CA000900	Spring Washer (@4-No2)	스프링 와셔(호칭 4)			○	2	
80	PWS-AA001000	Washer (4@)	수들평와셔(호칭경4)			○	2	
81	10-003A-SC53	Positioning Sensor	포토센서(TLP832)				1	
82	PSC-BD001100	Plus Screw (M3*L5)	제어체스토퍼침나사(M3XL5-접시머리)			○	2	
83	LYF-BB003000	Y-Tension Adjusting Bracket	Y축장력조절브라켓				2	
84	PSC-AC001300	Hex. Socket Bolt (M5*L20)	육각구멍볼이 볼트(M5xP0.8,L=20)			○	4	
85	PWS-CA000800	Spring Washer (5@)	스프링 와셔(호칭 5)			○	4	
86	PWS-AA001500	Washer (@5)	원형 평와셔(호칭경 5)			○	4	
87	PWS-AA001000	Hex.Socket Bolt (M4*L16)	원형 평와셔(호칭경 4)			○	2	
88	PWS-CA000900	Spring Washer (@4-No2)	스프링 와셔(호칭 4)			○	2	
89	PWS-AA001000	Washer (4@)	원형 평와셔(호칭경 4)			○	2	
90	DPL-BC009500	TIMING PULLEY	Y중동타이밍폴리(조)				2	
91	PBR-BA002000	Needle Bearing	Mm니들 베어링(1210(NTN))			○	4	
92	DWS-AA022800	Washer (Tw1225)	우레탄 와셔(TW1225)(12.3x25x0.8)				4	
93	LYF-KC001500	Timing Pulley Shaft (Y)	중동타이밍폴리축(Y)				2	
94	PSC-CB000900	Hex. Socket Set Screw (M3*L5)	육각구멍볼이 멈춤나사			○	4	
95	LYF-BJ002100	Tension Adjusting Plate	Y구동타이밍벨트장력조절판(82*64.8*5T)				2	
96	PSC-AC004900	Hex.Socket Bolt (M4*L12)	육각구멍볼이볼트(M4xP0.7,L=12,			○	8	
97	PWS-CA000700	Spring Washer (@4)	보빈스탠드스프링와셔(호칭경4)			○	8	
98	PWS-AA004400	Washer (@4-L)	Beam 지지대 평와셔 (호칭경 8)			○	8	
99	LYF-BK002000	Fixed Block	장력조절판고정블럭A				4	
100	PSC-AC004900	Hex.Socket Bolt (M4*L12)	육각구멍볼이볼트(M4xP0.7,L=12,			○	4	

Ref. No	Part No.	Part Name	품 명	Applicat iondate	Interchan geability	Hard ware	Q'ty	Re marks
101	PWS-CA000900	Spring Washer (@4-No2)	스프링 와셔(호칭 4)			○	4	
102	PWS-AA001000	Washer (4@)	원형 평와셔(호칭경 4)			○	4	
103	PSC-AC023600	Hex. Socket Bolt (M5*L30)	나사(M5*L30)			○	2	
104	PWS-CA000800	Spring Washer (5@)	스프링 와셔(호칭 5)			○	2	
105	PWS-AA001500	Washer (@5)	원형 평와셔(호칭경 5)			○	2	
106	25054EL-UK01	Cable (25-54)	Y-ORIGINAL IN				1	
107	LYF-BB003202	Y-Bearing Bracket (L)	Y축베어링브라켓-좌				2	
108	LYF-BB003302	Y-Bearing Bracket (R)	Y축베어링브라켓-우				2	
109	PSC-AC002000	Hex. Socket Bolt (M6*L20)	캠베이스브라켓핀나사(M6*L20)			○	8	
110	PBR-AA003200	Needle Bearing (6002Z)	볼베어링			○	8	
111	DBS-AA000600	Bearing Collar	베어링스토퍼카라A				4	
112	DSC-CB003200	Hook Shaft Bush Screw	흑축못싱고정나사				8	
113	DPL-BC009300	TIMING PULLEY(16-S5M-32F)	Y-구동폴리(16-S5M-32F)				2	
114	PSC-CB000300	Hex.Socket Set Screw(M5*L5)	흑축카라고정나사(M5XL5-무두)			○	8	
115	GP-047317-00	Y-Bearing Bracket Cover	Y축베어링브라켓커버				2	
116	PSC-AC007500	Bracket Screw (M3*L6)	나사(M3XL6-렌치볼트)			○	4	
117	PWS-CA001800	Spring Washer (3@)	실감지보드스프링와셔(호칭경3)			○	4	
118	PWS-CA002800	Spring Washer (@3-S)	스프링 와셔(호칭경3)			○	4	
119	GP-060045-01	Y-Lm Guide Frame	Y-후레임				2	
120	GP-060046-01	Y-FraneGuideRail	Y-후레임가이드레일				4	
121	PSC-AC000500	SCREW	육각구멍볼이 볼트(M4xP0.7L=16)				28	
122	LYF-BB002600	BRACKER FOR X-Y CONNECTING	X-Y 연결브라켓				2	
123	PSC-AC004900	Hex.Socket Bolt (M4*L12)	육각구멍볼이볼트(M4xP0.7,L=12,			○	16	
124	PWS-CA000900	Spring Washer (@4-No2)	스프링 와셔(호칭 4)			○	16	
125	PWS-AA001000	Washer (4@)	원형 평와셔(호칭경 4)			○	16	
126	LYF-BJ001800	Plate For Y-Sensing	Y이송센서감지판_소두K-Series				1	
127	PSC-AC002800	Hex. Socket Bolt (M3*L8)	나사(M3XL8)			○	2	
128	PWS-CA001800	Spring Washer (3@)	스프링와셔(호칭경3)			○	2	
129	PWS-AA001900	Spring Washer (@3-S)	원형 평와셔(호칭경 3)			○	2	
130	LYF-BK002100	Belt Catcher Plate (Y)	타이밍벨트고정판(Y)				4	
131	DSC-GA000700	Cam Roller Stud (A)	캠롤러단나사A				8	
132	PSN-AA002500	Hex. Nut (M4-No2)	육각 너트(M4xP0.7)			○	8	
133	PWS-CA000700	Spring Washer (@4)	스프링 와셔(호칭 4)			○	8	
134	DSC-BF010700	Cam Roller Stud (B)	캠롤러단나사B				8	
135	PSN-AA004500	Hex.Nut (M5)	육각 너트(M5)			○	8	
136	PBR-FK000100	Cam Roller Bearing	M트랙롤러				16	
137	PBT-BC004800	Y-Driving Timing Belt (L1250)	STD형 타이밍벨트				2	
138	LYF-BB002900	X-Y assistant connecting plate	XY보조연결브라켓				2	
139	AS-021297-00	Y-Driving Timing Pulley Box Assy	Y-구동폴리박스(조)				1	
140	LYF-LB000300	Y-Driving Box CoverA	P_Y축구동박스커버A				2	
141	LYF-BB003100	Y-Driving Box Bracket	P_Y-구동박스브라켓				2	
142	PSC-AC007700	Hex. Socket Bolt "B"(M8*L35)	육각구멍볼이 볼트(M8xP1.25L=35)				20	
143	PWS-CA002000	Spring Washer (@8)	스프링와셔(호칭8)				36	
144	DWS-AA009900	Stud Bolt Washer(S) (@8)	작은평와셔@8				36	
145	PBR-AA011300	Roller Bearing	볼 베어링(6804ZZ)				2	
146	LYF-CL000400	Tension Adjusting Roller	텐션조정로울러				1	
147	DBS-DB017900	Idler Bush	아이들러핀심붓싱(@10*@20*L59.5)				1	
148	PSC-CB004800	Hex. Socket Bolt (M6*L6)	나사(M6XL6-무두렌치)				1	
149	PSR-AA001900	C-Ring	C형(축용) 멈춤링(호칭경 20)				1	
150	LYF-KF003101	Idler Shaft	아이들러축(@10*L134.5)				1	

Ref. No	Part No.	Part Name	품 명	Applicat iondate	Interchan geability	Hard ware	Qty	Re marks
151	DMPD3-000003	Y Motor (103H89222-5212)	750W XY-DIRECT MOTOR D-KUT				1	
152	PSC-AC023500	Hex.Socket Bolt (M6*L30)	육각구멍볼이 볼트(M6xP1L=30)				4	
153	PWS-CA002700	Spring Washer (@6)	스프링 와셔(호칭 6)				4	
154	PWS-AA001400	Washer (@6)	원형 평와셔(호칭경6)				4	
155	GP-044598-00	Coupling	Y구동축커플링				1	
156	PSC-CB001401	Hex. Socket Bolt (M8*L8)	육각구멍볼이 멈춤나사(M8XL8)				2	
157	PL-000153-00	Y-Driving Timing Pulley	Y-구동타이밍풀리				1	
158	PSC-AC005800	Hex. Socket Bolt (M6*L15)	육각구멍볼이 볼트(M6xP1L=15)				1	
159	PWS-CA002700	Spring Washer (@6)	스프링 와셔(호칭 6)				5	
160	PWS-AA001400	Washer	원형 평와셔(호칭경 6)				5	
161	PBR-AA011400	Bearing(6004zz)	볼 베어링(6004ZZ (KBC))				3	
162	DCL-AB004500	Bearing Stopper Collar	베어링스토퍼카라 @20				3	
163	DSC-CB003200	Screw(15/ 64-28)	육각구멍볼이 멈춤나사				8	
164	DCR-AH001300	Coupling "A"	리지드형 커플링				4	
165	PSC-AC017400	Hex. Socket Bolt (M5*L15)	육각구멍볼이 볼트(M5xP0.8L=15)				8	
166	ST-001392-01	Y-Driving Shaft "A"	Y-구동축(A)(L860)				2	
167	ST-001393-02	Y-Driving Shaft "B"	Y-구동축(B)(L=238)				2	
	ST-001388-01	Y-Driving Shaft	Y-구동박스중동축				2	
168	16078BR-UK01	Pillow Block Set	Y축베어링(조)				1	
169	PSC-AC005800	HEX.SOCKET BOLT (M6*L15)	육각구멍볼이 볼트(M6xP1L=15)				2	
170	PWS-CA002700	Spring Washer (@6)	스프링 와셔(호칭 6)				2	
171	PWS-AA001400	Washer (@6)	원형 평와셔(호칭경 6)				2	
172	PL-000154-00	Lower Shaft Timing Pulley	Y-중동타이밍풀리				1	
173	BE-000023-00	Y-Driving Timing Belt	Y축구동타이밍벨트				1	
174	GP-060047-00	Y-Driving Box	Y-구동박스				1	
175	AS-021309-03	Y-auxiliary frame Assy	Y-보조후레임(조)				2	
176	GP-060031-02	Y-auxiliaryframe	Y-보조후레임				2	
177	GP-060036-00	Y-auxiliary frame connect plate	Y-보조후레임연결판				1	
178	GP-060038-00	Y-auxiliary frame Tension control bracket	Y-보조후레임장력조절브라켓				1	
179	DWS-AA022800	Urethane Washer (TW1225) (12.3x25x0.8)	우레탄 와셔(TW1225)(12.3x25x0.8)				6	
180	PBR-BA002000	Needle Bearing (1210 (NTN))	니들 베어링(1210(NTN))				6	
181	ST-001386-00	Y-auxiliary frame pulley shaft (A)	Y-보조후레임풀리축(A)				1	
182	PL-000152-00	Y-auxiliary frame pulley (B)	Y-보조후레임풀리(B)				2	
183	ST-001387-01	Y-auxiliary frame pulley shaft (B)	Y-보조후레임풀리축(B)				2	
184	GP-060039-00	Y-auxiliary frame idler	Y-보조후레임아이들러				1	
185	BE-000384-00	Timing Belt	STD형 타이밍벨트_S5M_폭25mm				120	
186	GP-060037-02	Y-auxiliary frame Belt Bracket	Y-보조후레임벨트브라켓				1	
187	GP-060035-01	Y-auxiliary frame belt fixing plate (B)	Y-보조후레임벨트고정판(B)				1	
188	GP-060033-01	Y-auxiliary frame LM base plate	Y-보조후레임LM베이스판				1	
189	GP-060032-00	Y-auxiliary frame connection block	Y-보조후레임연결블럭				1	
190	PBR-FB003000	LMguider ail	LM가이드레일				1	
191	PL-000151-00	Y-auxiliary frame pulley (A)	Y-보조후레임풀리(A)				1	
192	GP-060034-02	Y-auxiliary frame Bearing case	Y-보조후레임베어링케이스				1	
193	PBR-AA004100	Ball Bearings (6003ZZR (KBC))	볼 베어링(6003ZZR(KBC))				2	
194	DCL-AB005402	Lower Shaft bushing	하축베어링붓싱@28				2	
195	PSC-AC018100	bolt (M3xP0.5, L = 8)	육각구멍볼이 볼트(M3xP0.5, L=8)				15	
196	PSC-BB003600	screw	접시 작은나사(M3xP0.5, L=6)				8	
197	PSC-AC007100	bolt (M4xP0.7, L = 10)	육각구멍볼이 볼트(M4xP0.7, L=10)				8	
198	PWS-CA000900	Spring washers	스프링 와셔(호칭 4)				8	
199	PWS-AA001000	washer	원형 평와셔(호칭경 4)				8	

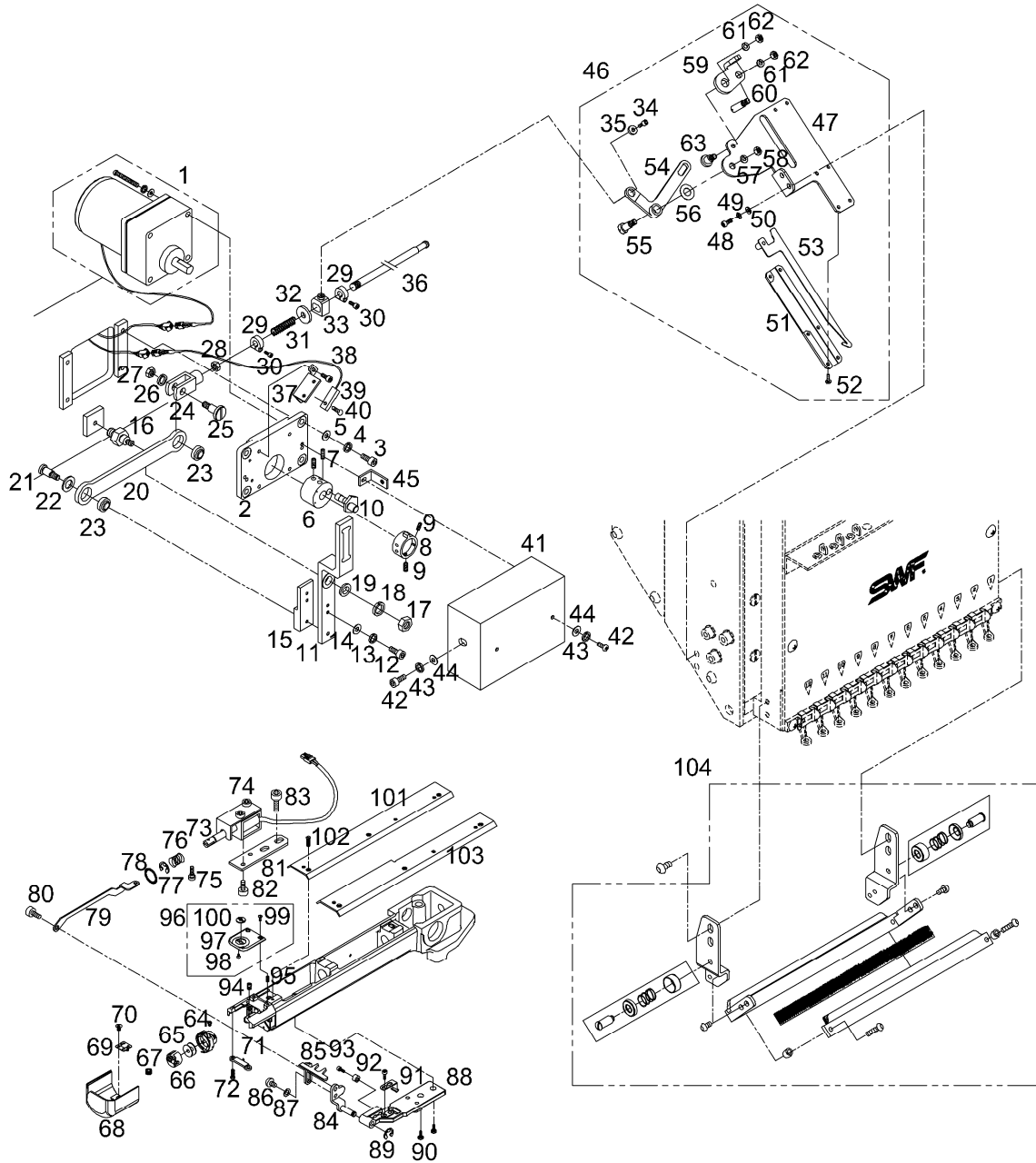






# Setting Mechanism

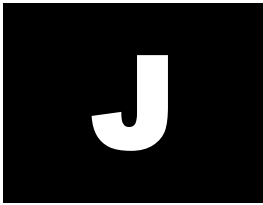
## 세팅 관계



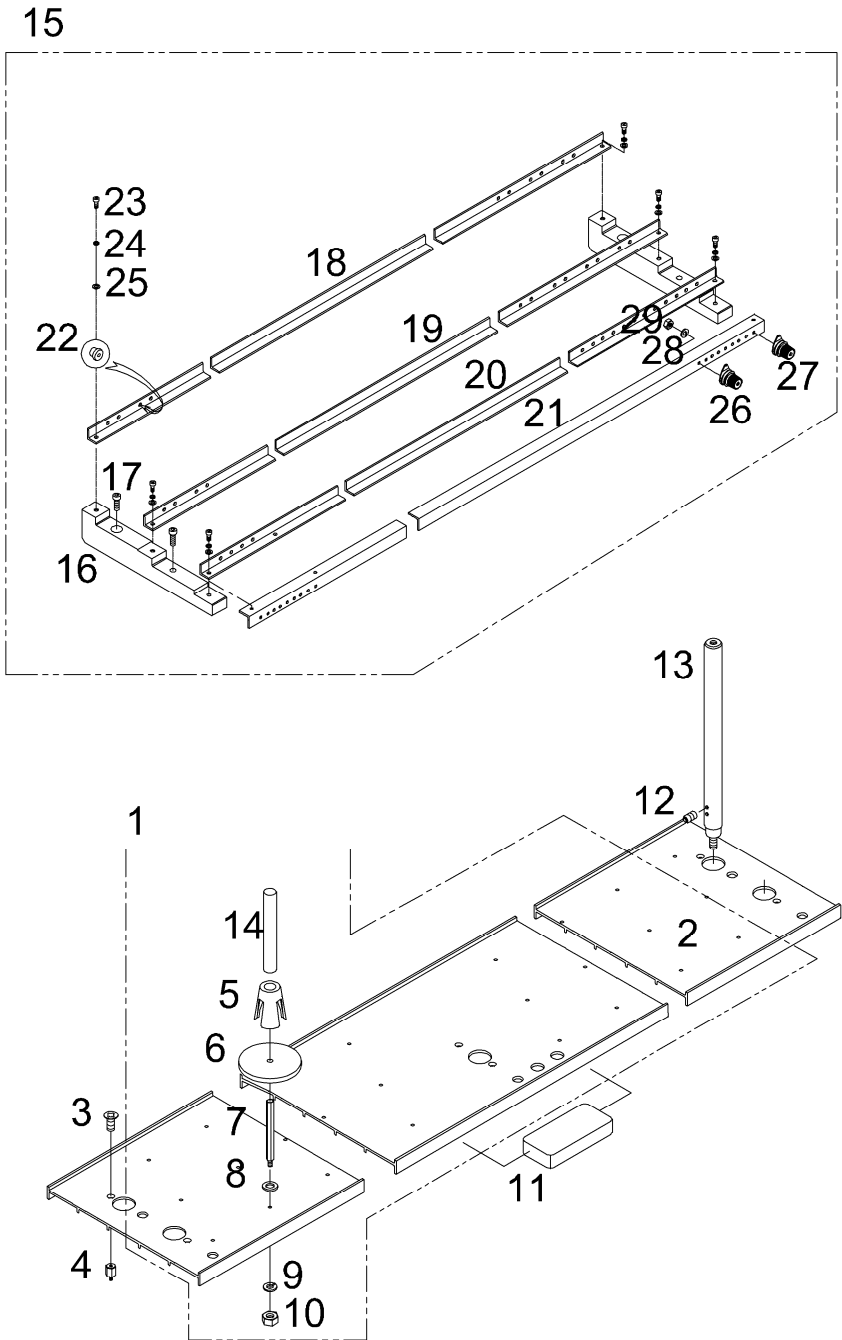
Ref. No	Part No.	Part Name	품 명	Applicat iondate	Interchan geability	Hard ware	Q'ty	Re marks
1	BWP-PS001700	Upper Thread Hook Motor Unit	와이퍼모터				1	
2	GP-049250-01	MOTOR BASE	윗실잡이모터베이스				1	
3	PSC-AC007200	Hex.Socket Bolt(M6*L25)	참나사(M6XL25)			○	4	
4	PWS-CA001000	Spring Washer (@6)	스프링와셔(호칭경6)			○	4	
5	PWS-AA001400	Washer (@6)	평와셔(호칭경6 평와셔)			○	4	
6	LWP-BK000100	Cam Shaft Fixing Block	캠축고정블럭 고속				1	
7	PSC-CB001900	Hex.Socket Bolt(M5*L8)	캠축고정블럭고정나사(M5XL8)			○	2	
8	LWP-BN000102	Sensor Sensing Adjusting Ring	센서감지조정링				1	
9	PSC-CB000300	Hex.Socket Set Screw(M5*L5)	육각구멍볼이 멈춤나사(M5xP0.8L=5)			○	2	
10	LWP-KH000100	Motor Driving Cam Shaft	모터구동캠축 고속				1	
11	LWP-BJ000101	Upper Thread Driving Plate	윗실잡이구동판@20				1	
12	PSC-AC003900	Hex/ Socket Bolt (M5*L15)	나사(M5XL15 렌치)			○	2	
13	PWS-CA000800	Spring Washer (5@)	수틀후레임E스프링와셔(호칭경5)			○	2	
14	PWS-AA001500	Washer (@5)	수틀후레임E평와셔(호칭경5 평와셔)			○	2	
15	LWP-BK000200	Driving Plate Block	윗실잡이구동판블럭				1	
16	DSC-FG002900	Stud Bolt For Driving Plate	윗실잡이구동판스텝볼트				1	
17	DSN-AA005500	Hex. Nut (M8-No2)	흑베이스스텝너트(M8*P1.25)			○	1	
18	PWS-CA002000	Spring Washer (@8)	스프링와셔(@8)			○	1	
19	DWS-AA021400	Stud Bolt Washer	스텝볼트와셔(호칭경8.3*@15*2T)			○	1	
20	LWP-BJ000201	MOTOR DRIVING CONNECT PLATE	모터구동연결판(L185)고속				1	
21	DSC-FA022300	Connecting Plate Stud Screw A	모터구동연결판단나사A)				1	
22	DWS-AA020500	Connecting Plate Pin Washer	모터구동연결판핀와셔(8.2x14x1.2.)				1	
23	PBR-AA010300	Motor Driving Connect Bearing	모터구동연결판베어링(IKO GE8E)				2	
24	LWP-BM000100	Connecting Plate Knuckle	모터구동연결판너클 고속				1	
25	DSC-FA022401	Connecting Plate Stud Screw	모터구동연결판단나사 (납작 단나사)				1	
26	PWS-CA001000	SPRING WASHER (@6)	스프링와셔(호칭경6)			○	1	
27	PSN-AA001300	Hex.Nut (M6*T5-R)	육각 너트(M6xP1)			○	1	
28	DSN-AA005500	Hex. Nut (M8-No2)	흑베이스스텝너트(M8*P1.25)			○	1	
29	LWP-BK000301	Return Spring Stopper	복귀스프링스토퍼(HA-MT)				12	
30	PSC-AC017000	Hex.Socket Bolt (M4*L16)	육각구멍볼이 볼트(M4L=16)			○	12	
31	DSP-AA014500	Return Spring	윗실잡이복귀스프링 고속				6	
32	DWS-AA020600	Return Spring Stopper Washer	복귀스프링스토퍼와셔(8.1x18x0.5)				6	
33	LWP-BK000400	Return Spring Fix Pin	복귀스프링고정핀 고속				6	
34	PSC-AC007100	Hex.Socket Bolt(M4*L10)	육각구멍볼이 볼트(M4xP0.7L=10)			○	6	
35	DWS-AA020700	Return Spring Fix Pin Washer	복귀스프링고정핀와셔(4x12x1.6)				6	
36	GP-030566-00	Upper Thread Driving Shaft	윗실잡이이동축				1	
37	LWP-BA000200	UPPER THREAD HOOK SENSOR BASE	윗실잡이센서베이스				1	
38	PSC-AC007500	BRACKET SCREW (M3*L6)	육각구멍볼이볼트(M3xP0.5,L=6)			○	2	
39	CFA-BB004200	SENSOR	원점센서(TL-W3MC1)				1	
40	PSC-BB002200	Plus Screw (M3*L10)	접시 작은나사(M3xP0.5L=10)			○	1	
41	LWP-LA000900	Upper Thread Hook Motor Cover	윗실잡이모터커버 6두				1	
42	PSC-AC004100	Hex. Socket Bolt (M4*L8)	육각구멍볼이 볼트(M4xP0.7L=8)			○	4	
43	PWS-CA000900	SPRING WASHER (@4-NO2)	스프링 와셔(호칭 4)			○	3	
44	PWS-AA001000	WASHER (4@)	원형 평와셔(호칭경 4)			○	3	
45	LWP-BB000100	Motor Cover Fixing Bracket	P_윗실잡이모터커버고정브라켓				2	
46	AS-021530-00	Wiper Assy	와이퍼(조)				6	
47	GP-060955-00	Upper ThreadCatcher Base	윗실잡이베이스				6	
48	PSC-AC004100	Hex.SocketBolt(M4*L8)	육각구멍볼이 볼트(M4xP0.7L=8)			○	12	
49	PWS-AA001000	Washer (4@)	원형 와셔(호칭 4)			○	12	
50	PWS-CA000900	SpringWasher(@4-No2)	스프링 와셔(호칭 4)			○	12	

Ref. No	Part No.	Part Name	품 명	Applicat iondate	Interchan geability	Hard ware	Q'ty	Re marks
51	LWP-LA000200	UpperThreadHookBaseCover	윗실잡이베이스커버				6	
52	DSC-BH000600	TrussScrew(M3*L5)	트러스작은나사()(M3*L5)				6	
53	AS-021528-00	UpperThreadHookAssy	윗실잡이조				6	
54	LWP-CM000101	UpperThreadHookDrivingLever	윗실잡이운동레버				6	
55	DSC-FA023600	WiperDrivingLeverStudScrew	와이퍼 운동레버 단나사			○	6	
56	DWS-AA020800	DrivingLeverPinWasher	운동레버핀와셔				6	
57	PWS-CA001000	SpringWasher(@6)	스프링와셔				6	
58	PSN-AA001300	Nut(M6)	너트				6	
59	GP-061046-00	WiperClutchLever	와이퍼 클러치 레버				6	
60	DSC-FF004300	WiperClutchStudBolt	와이퍼 클러치 단나사				6	
61	PWS-CA000900	SpringWasher(@4-No2)	스프링와셔				12	
62	PSN-AA002300	Nut(M4)	너트				12	
63	DSC-FA023700	WiperClutchLeverStudBolt	와이퍼 클러치 레버단나사			○	6	
64	LHB-HA000101	Rotary Hook Set	가마 HSH-7.94ATR(MQSUNL)				6	
65	LHB-HB000100	Bobbin	보빈(711091)A001(J)				6	
66	LHB-HC000100	Bobbin Case Set	보빈케이스				6	
67	GP-005361-00	Hook Cover insert	훅커버인서트				12	
68	LHB-LA000100	Hook Cover	훅커버				6	
69	PTC-AD000600	Hook Cover Hinge	경첩(W20,L20,t=0.8)				6	
70	08014AF-A001	Plus Screw (M3*L8)	나사(M3*L8)			○	12	
71	LPC-BG000100	Rotary Hook Support	훅커버홀더				6	
72	PSC-BA001800	Rotary Hook Support Screw	나사(9/64 N40 L5.5)				8	
73	AS-003154-01	Picker Sol(set)	피커솔레노이드(조) (DUAL 24V)				6	
74	PSC-BH003100	Truss Screw (M3*L4)	트러스 작은나사(M3xP0.5L=4-3			○	12	
75	DSC-BF020000	Sol. Stud Screw	나사				6	
76	DSP-AA017700	Sol. Spring	피커솔레노이드스프링				6	
77	PSR-AC001500	E-Ring (@4)	E형 멈춤링			○	6	
78	DWS-AA023100	Cushion Washer	피커솔레노이드쿠션와셔				6	
79	LPC-BJ000400	Connecting Plate	연결플레이트				6	
80	08012CW-T121	Connecting Plate Stud Screw	연결레버단나사				6	
81	LPC-BJ000300	Picker Sol. Base	피커솔레노이드베이스				6	
82	PSC-BH002900	Plus Screw(M3*L4)	나사(M3XL15)			○	12	
83	PSC-AC007100	Hex.Socket Bolt(M4*L10)	침나사B(M4XL10)			○	12	
84	AS-001429-03	Picker Base Ass'Y	피커베이스(조)				6	
85	LPC-BJ000500	Picker	피커				6	
86	PSC-BD001300	Plus Screw (M3*L8)	침나사(M3XL8)			○	12	
87	DWS-AA027100	Washer for Picker Base	피커베이스와셔(φ4 열처리평와셔)				12	
88	LPC-BB000100	Picker Bracket	피커브라켓(K8869)				6	
89	PSR-AC002300	E-Ring (3@)	E형 멈춤링(호칭경3열처리후 )			○	6	
90	116410S-8118	Driver Screw 11/64-40,L10	나사 (11/64-40,L10)				12	
91	LPC-BG000100	Hook Cover Holder	훅커버홀더				6	
92	LPC-FA000100	Picker Stopper	피커스토퍼(조)				6	
93	PSC-AC013400	Screw(M3*L10)	육각구멍볼이 볼트(M3xP0.5L=10)				6	
94	DSC-BF022000	Needle Plate Pin	침판고정핀				6	
95	02008SC-4122	Needle Plate Bracket Screw	나사(11/64-40 L16)				12	
96	BHB-PS002300	Needle Plate Set(Cap)	침판(조)3.0-TUBULAR				6	
97	LHB-GA000500	Needle Plate(Cap)	침판-CAP용_A-T1201				6	
98	DSC-BB007500	Cushion Cover Screw(M3*L2.3)	접시 작은나사(M3xP0.5L=2.3광)			○	12	
99	DSC-BC000300	Needle Plate Screw	침판침나사(#704241)				12	
100	LHB-BB000501	Needle Guide Plate	바늘안내판				6	

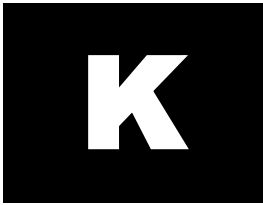




Spool Mechanism  
스풀 관계

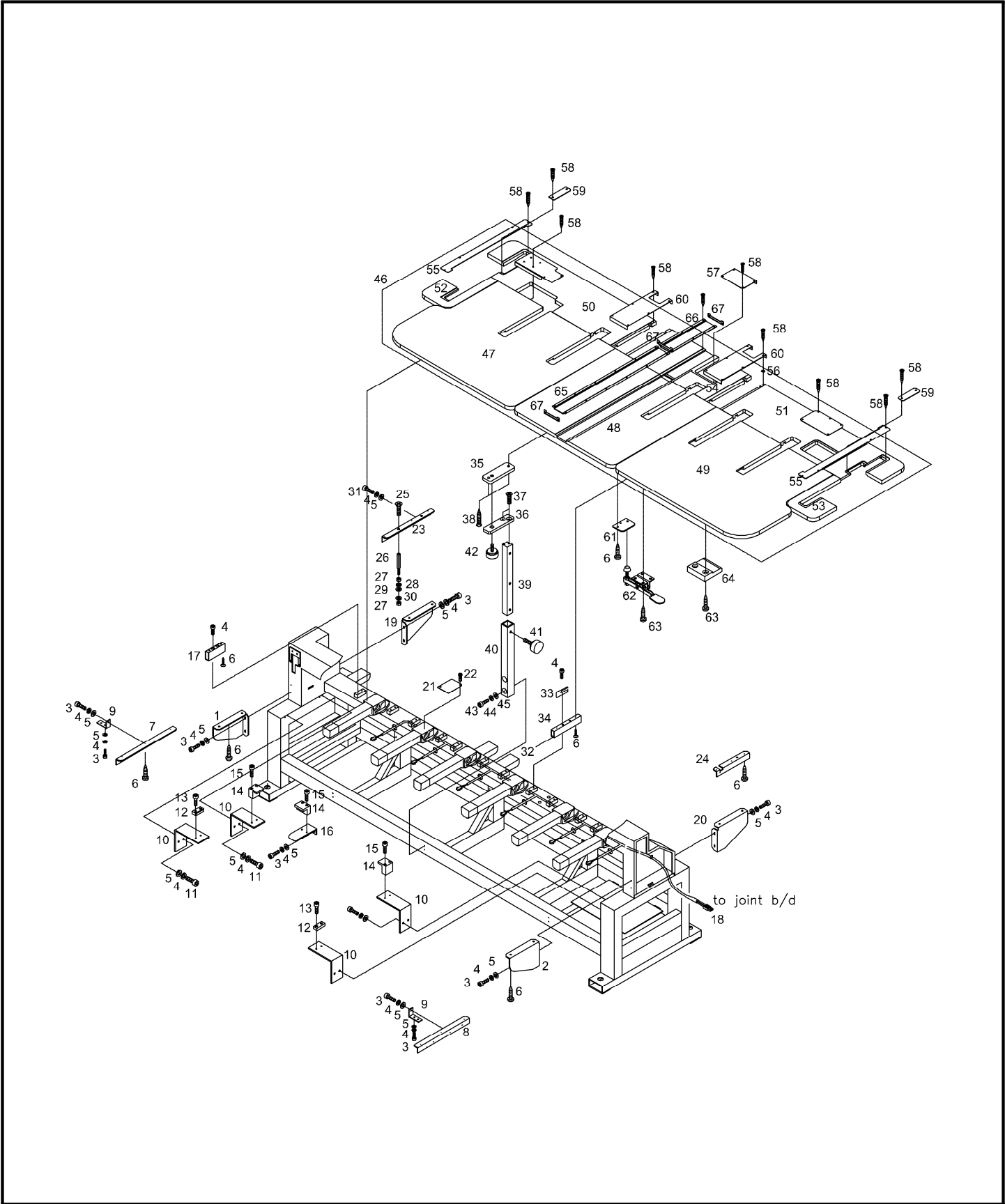


Ref. No	Part No.	Part Name	품 명	Applicat iondate	Interchan geability	Hard ware	Qty	Re marks
1	AS-002104-00	Spool Plate Assy	스풀판(조)				1	
2	05100105UH00	SpoolPlate	스풀판L=2480				1	
3	PSC-AC004100	Plus Screw (M4*L8)	육각구멍볼이 볼트(M4xP0.7, L=8)			○	8	
4	GP-018125-00	Spool Plate Fixing Bolt M6*L21	스풀스터드볼트(M6*L28,L21)			○	8	
5	12012PM-A001	Spool Holder	스풀홀더				90	
6	12052SF-A001	Spool Sponge	스풀 스폰지				90	
7	GP-054029-00	Spool Post	실패꽃이봉				90	
8	PWS-AA001500	Washer (@5)	원형 평와셔(호칭경 5)			○	90	
9	PWS-CA000800	Spring Washer (@5)	스프링 와셔(호칭 5)			○	90	
10	PSN-AA004500	Hex.Nut (M5)	육각 너트(M5)				90	
11	12033RB-UK01	Cushion Rubber	수풀판쿠션고무				1	
12	PSC-CB000300	Hex.Socket Set Screw(M5*L5)	흑축카라고정나사(M5XL5-무두)			○	16	
13	GP-052771-00	스풀스탠드(L=380)	스풀스탠드(L=380)				8	
14	10000100A000	Thread Guide L=200	실안내봉 L=200				12	
15	AS-002105-00	Angle Assy	실걸이앵글(조)B				1	
16	GP-056503-00	Thread Angle Frame	실걸이앵글후레임(다두) L186				4	
17	PSC-AC003900	Hex. Socket Bolt (M5*L15)	육각구멍볼이볼트(M5xP0.8,L=15)			○	16	
18	05200105UH00	Angle "A" L=2420	실걸이앵글"A" L=2420				1	
19	05200205UH00	Angle "B" L=2420	실걸이앵글"B" L=2420				1	
20	05200305UH00	Angle "C" L=2420	실걸이앵글"C" L=2420				1	
21	05200415UH00	Angle "D" L=2420	실걸이앵글"D" L=2420				1	
22	12042PM-A001	Eyelet	실걸이봇싱				180	
23	PSC-AC007100	Hex.Socket Bolt(M4*L10)	첨나사B(M4XL10)				12	
24	PWS-CA000900	Spring Washer (@4)	스프링 와셔(호칭 4)				12	
25	PWS-AA001000	Washer (@4)	원형 평와셔(호칭경 4)				12	
26	10600110B000	SUBTENSIONADJUSTING SET	보조실조절장치(NEW)				84	
27	10600210B000	SUB TENSION ADJUSTING SET	보조실조절장치(조)				6	
28	PWS-CA000800	Spring Washer (@5)	스프링 와셔(호칭 5)			○	90	
29	DSN-AA006300	Pin. Nut (11/64,N=40)	바늘대운동레버핀너트(11/64" n=40)			○	90	



# Table Mechanism

테이블 관계



Ref. No	Part No.	Part Name	품 명	Applicat iondate	Interchan geability	Hard ware	Qty	Re marks
1	16020PR-UK01	Front Table Support (L)	전면테이블받침(좌)				1	
2	16025PR-UK01	Front Table Support (R)	전면테이블받침(우)				1	
3	PSC-AC018600	Hex. Socket Bolt (M5*L12)	육각구멍볼이 볼트(M5xP0.8,L=12))			○	36	
4	PWS-CA000800	Spring Washer (@5)	스프링 와셔(호칭 5)			○	38	
5	PWS-AA001500	Washer (@5)	원형 평와셔(호칭경 5)			○	38	
6	16009SC-8330	Tapping Screw (M6*L20)	나사(M6*L20)			○	88	
7	GP-045178-00	TABLE SUPPORT ANGLE (A1)	테이블지지대A-1 (33*35*L400)				1	
8	GP-045179-00	TABLE SUPPORT ANGLE (D1)	테이블지지대D-1(33*35*L400)				1	
9	05001500UK40	ANGLE SUPPORT	지지대앵글(76.5*59.5*4.5T)				4	
10	GP-060318-00	Table Fixing Plate	테이블받침고정판(L152)				4	
11	PSC-AC001300	Hex. Socket Bolt (M5*L20)	육각구멍볼이 볼트(M5xP0.8,L=20))			○	8	
12	17085PM-UK01	Positioning Block	위치결정구				2	
13	PSC-AC007100	Hex.Socket Bolt (M4*L10)	육각구멍볼이 볼트(M4xP0.7,L=10))				8	
14	GP-045797-00	Table Fixing Block	테이블고정블럭(25.5*35)				4	
15	PSC-AC004400	Hex. Socket Bolt (M4*L25)	육각구멍볼이 볼트(M4xP0.7,L=25))			○	14	
16	17073PR-UK01	Table Support Angle "F"	테이블지지대(F)				2	
17	GP-060049-00	Table Support Angle (B)	테이블지지대(B)(L180)				1	
18	02102100UH60	Cable (25-21)	피커솔레노이연결케이블				1	
19	GP-008800-00	Rear Table Support (L)	후면테이블받침(좌)				1	
20	GP-008799-00	Rear Table Support (R)	후면테이블받침(우)				1	
23	05000920UH01	TABLE SUPPORT ANGLE (A)L250	테이블지지대				1	
24	GP-045185-00	TABLE SUPPORT ANGLE (D)L250	테이블지지대				1	
25	04054SC-8119	Plus Screw(M6*L15)	나사(M6*L15)			○	4	
26	05001600U000	Table Support Stud	테이블지지스텝볼트(L=100)				4	
27	DSN-AA005500	Hex. Nut (M8-No2)	흑베이스스텝너트(M8*P1.25)			○	8	
28	PWS-CA002000	Spring Washer (@8)	스프링와셔(호칭8)			○	4	
29	DWS-AA009900	Stud Bolt Washer(S) (@8)	작은평와셔@8			○	4	
30	DWS-AA022700	Stud Bolt Washer(L) (@8)	큰평와셔(@8)			○	4	
31	PSC-AC001300	Hex. Socket Bolt (M5*L20)	육각구멍볼이 볼트(M5xP0.8,L=20))			○	6	
32	GP-011803-00	TABLE SUPPORT END CAP	테이블지지대고무마개 (절감형)				20	
33	05001700U000	Table Support Plate	테이블지지대받침판				46	
34	GP-060048-00	Table Support Angle (A)	테이블지지대(A)(L238)				10	
35	GP-048520-00	Table Support Plate (A)	테이블지지판(A) - SPCC				5	
36	16058AD-UK01	Table Support Plate (B)	테이블지지판(B)				4	
37	PSC-DC000300	Tapping Screw (M3*L16)	접시 태핑나사(호칭경 3,L=16)			○	44	
38	PSC-BB003000	C.S Screw (M4*L12)	접시 작은나사(M4xP0.7,L=10))				8	
39	GP-030270-01	Table Support	테이블지지봉 L283				5	
40	GP-030271-00	Table Support Guide	테이블지지봉가이드L460				5	
41	17062SC-UK01	Table Support Stopper Screw	손잡이나사(M6*L15)				3	
42	17063SC-UK01	Table Support Stopper Screw	손잡이나사(M6*L10)				3	
43	PSC-AC007100	Hex.Socket Bolt(M4*L10)	육각구멍볼이 볼트(M4xP0.7,L=10)			○	30	
44	PWS-CA000900	Spring Washer (@4)	스프링 와셔(호칭 4)			○	8	
45	PWS-AA001000	Washer (@4-L)	원형 평와셔(호칭경 4)				8	
46	AS-021295-02	Table Set	테이블(조)					
47	GP-060022-02	Table "A"	테이블(A)				1	
48	GP-060023-02	Table "B"	테이블(B)				1	
49	GP-060024-01	Table "C"	테이블(C)				1	
50	GP-060027-02	Fixed Table "A"	고정테이블(A)				1	
51	GP-060028-02	Fixed Table "B"	고정테이블(B)				1	
52	GP-060029-00	Fixed Table "C"	고정테이블(C)				1	

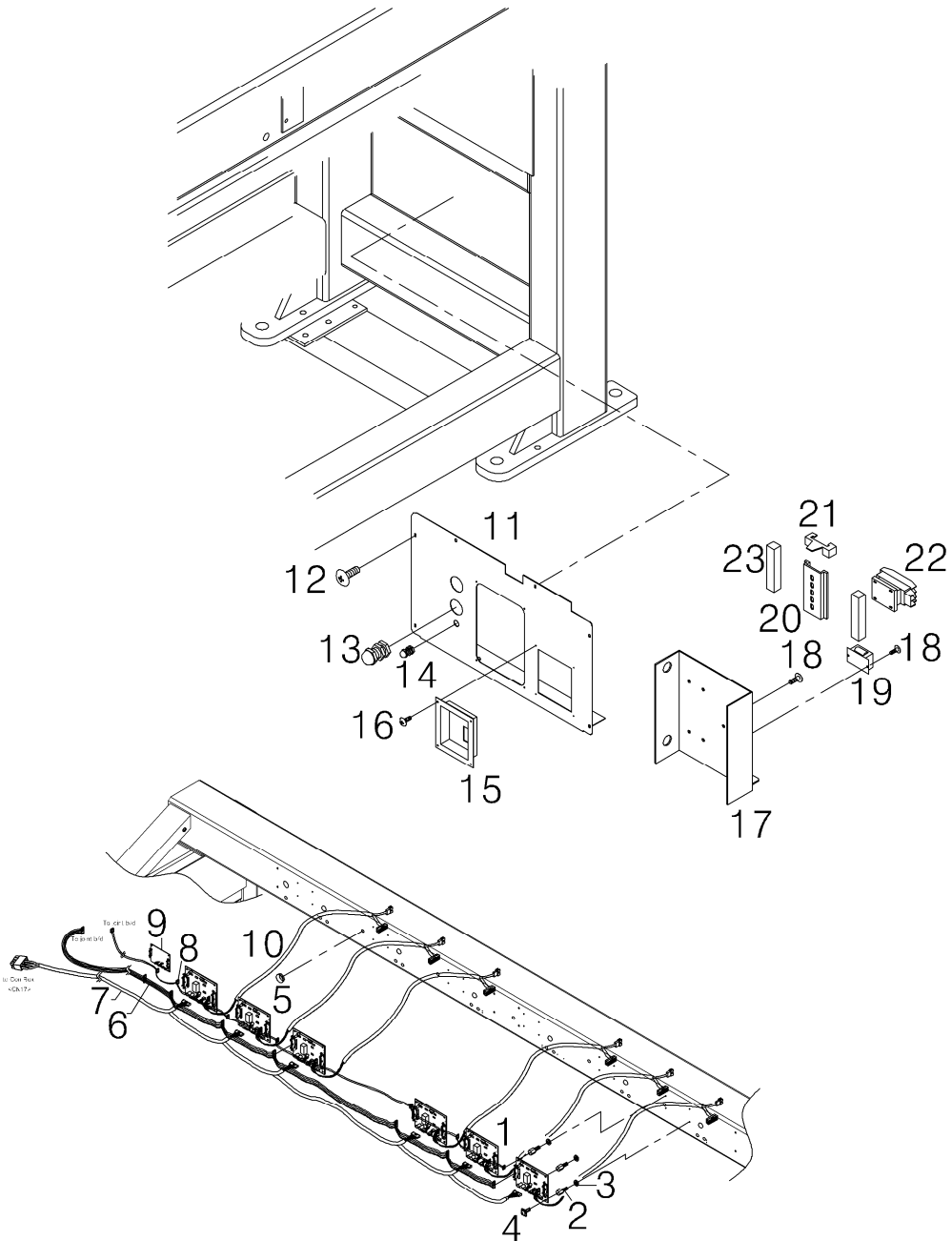


Ref. No	Part No.	Part Name	품 명	Applicat iondate	Interchan geability	Hard ware	Qty	Re marks
53	GP-060030-00	Fixed Table "D"	고정테이블(D)				1	
54	GP-060026-01	Fixed Table	고정테이블				1	
55	GP-060068-01	Lm Guide Cover (L) L=693	캠롤러가이드커버				2	
56	10000310A000	Washer T=0.3,0.5,0.8	테이블연결커버보강와셔(T=0.3,0.5,0.8)				31	
57	GP-007514-00	Y-Driving Box Cover B	Y-구동박스커버				1	
58	PSC-DC000300	Tapping Screw (M3*L16)	접시 태핑나사(호칭경 3,L=16)			○	30	
59	05001400UH00	Belt Cover	캠롤러벨트커버				2	
60	GP-060060-03	Rail Guide Table Cover	레일가이드테이블커버				2	
61	16065PR-UK01	Clamp Plate	클램프지시판				6	
62	16067ET-UK01	Table Toggle Clamp	토글클램프(006-21FS)				8	
63	19002SC-1330	Tapping Screw (4*L16-No1)	바스위치박스점나사(P+4*16)			○	40	
64	16063PM-UK01	Table Holding Block	테이블결합블록				10	
65	GP-060315-00	Boder Frame Guide Cover(A)	보더후레임가이드커버(A)				1	
66	GP-060316-00	Boder Frame Guide Cover(B)	보더후레임가이드커버(B)				1	
67	GP-060317-00	Boder Frame Guide Cover(C)	보더후레임가이드커버(C)				3	



# Cable Mechanism

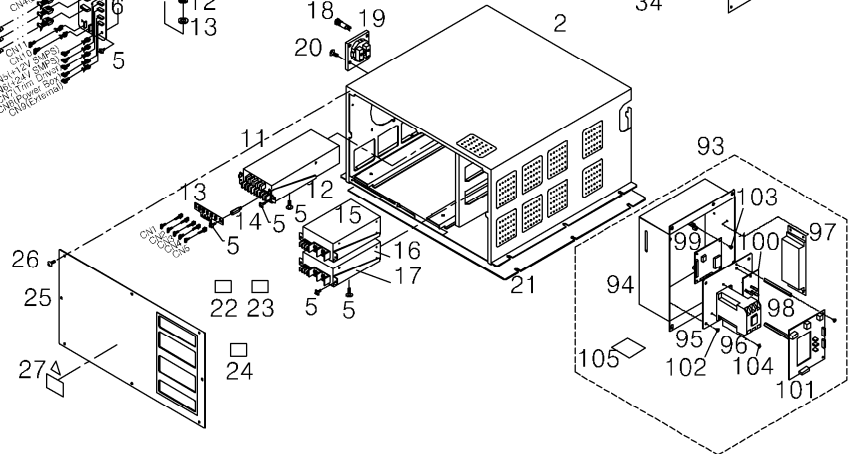
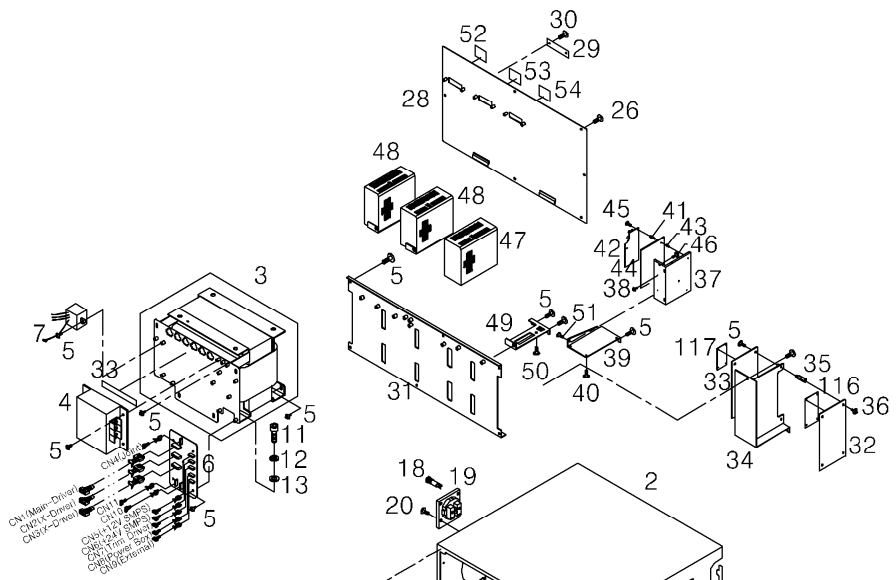
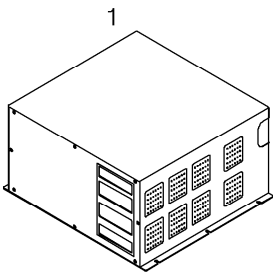
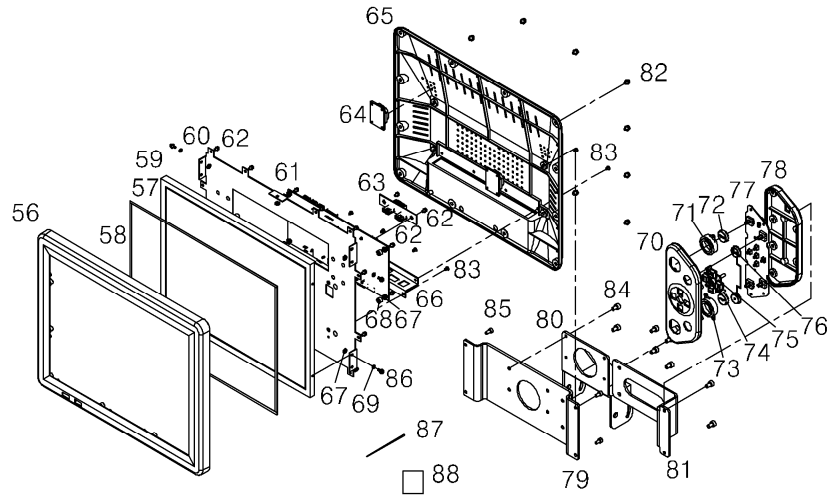
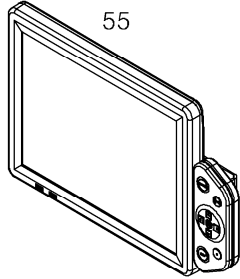
## 케이블 관계



Ref. No	Part No.	Part Name	품 명	Applicat iondate	Interchan geability	Hard ware	Q'ty	Re marks
1	BD-001806-05	Thread Sensing Board	THSB REV05				6	
2	11049SC-A001	Board Stud Bolt	실감지보드스텝볼트			○	28	
3	PWS-CA000800	Spring Washer (@5)	스프링 와셔(호칭 5)			○	28	
4	18154SC-9134	PLUS SCREW (M3*L8)	수테홀더고정나사A,B(M3*L8)				28	
5	02017PM-A001	Cable Ring	케이블링 505H				8	
6	CA-006776-02	Cable (Sh-57-4)	실감지 ENCODER LVDS 신호 (H-06)				1	
7	CA-006922-01	Cable (Sh-56-4)	실감지 보드 전원 4P (H-6)				1	
8	CA-001654-01	Cable (Sh-60-4)	CAN연결(UH-6H)케이블				1	
9	BD-001838-03	Dual Color Change Board	SDB REV01 (MP_CC) 컬러체인지				1	
10	CA-006790-01	Cable	실감지 to WHEEL보드 연결 케이블				6	
11	GP-060061-00	BODY INSIDE COVER "R"	바디내측커버(B)				1	
12	PSC-BH000200	Truss Screw (M5*L8)	트러스 작은나사(M5xP0.8, L=8)			○	61	
13	GP-060456-00	Cable Grand (Dapg-36)	케이블그랜드(DAPG-42)				2	
14	02000400T000	Cable Grand *Dac1-11)	케이블그랜드(DACL-11)				1	
15	02088PR-UK01	Power Switch Cover	전원스위치커버				1	
16	PSC-BH001100	Truss Screw (M4*L8)	트러스 작은나사(M4xP0.7, L=8)			○	4	
17	GP-057796-00	MAIN SWITCH BOX	주전원스위치박스(CE)				1	
18	PSC-AC007100	Hex.Socket Bolt(M4*L10)	육각구멍볼트(M4xP0.7, L=10)			○	4	
19	GP-051625-00	TRANSFORMER (EMT25V) 1A/25.5V	트랜스포머박스				1	
20	02000910T000	MAGNETIC S/W FIXED BRACKET	마그네틱스위치고정브라켓				1	
21	02001300T000	BRACKET STOPPER (CE)	브라켓스토퍼(CE)				2	
22	EP-000142-02	MAGNETIC SWITCH SET	마그네틱스위치				1	
23	09001400BT00	CEMENT RESISTANCE (4.7/20W)	시멘트저항				2	
24	CA-000506-02	SHUNT TRIP-POWER INDICATOR Cable	SHUNT TRIP 연결 케이블				1	
25	CA-000702-01	Main power switch output-Power disconnect box	주전원 스위치 출력-전원 차단 박스(CE-800) 케이블				1	
26	CA-002599-00	SE emergency switch-MS B/D(6H.8H)cable	SE비상스위치-MS보드(6H.8H)케이블				1	
27	CA-002600-00	MS B/D-CN6 cable	MS보드-CN6 케이블				1	
28	CA-002602-01	START_S-P switch-JOINT B/D cable	START_S-P 스위치-JOINT 보드 케이블				1	
29	CA-002700-01	Wiper motor-JNT(6000)cable	와이퍼 모터-JNT(6000) 케이블				1	
30	CA-002701-01	Wiper Sensor-JNT(6000)Cable	와이퍼 센서-JNT(6000) 케이블				1	
31	CA-002739-01	X Motor Power CURL Cable	X모터 전원 CURL 케이블				1	
32	CA-002769-00	Presser foot sensor B/D-Actuator B/D connection	노루발 센서보드-실감지보드 연결 케이블				6	
33	CA-002770-00	Presser motor intermediate connection cable	노루발 모터 중간 연결 케이블				6	
34	CA-003504-00	MAIN POWER INPUT CABLE	소두 MAIN 전원 입력 케이블				1	
35	CA-003656-00	Trimming motor-trimming DRV(MC1-3400)cable	사절 모터-사절 DRV (MC1-3400) 케이블				1	
36	CA-003657-00	Trunnion sensor-JNT(MC1-3400)cable	사절 센서-JNT (MC1-3400) 케이블				1	
37	CA-004741-00	Start.S-p Switch(- Switch)cable	Start.S-p Switch (- Switch) 케이블				3	
38	CA-005217-00	Ground cable in DUAL OP-BOX(600)	DUAL OP-BOX내 접지 케이블(600)				3	
39	CA-005892-00	Machine Controller-Joint B/D(400)cable	Machine Controller-조인트 보드 (400) 케이블				1	
40	CA-006731-00	Machine Controller-Joint B/D 36P(400)cable	Machine Controller-조인트보드 36P (400) 케이블				1	
41	CA-006734-00	IO B/D-OP KEY-BOX connection cable	IO보드-OP KEY-BOX 연결 케이블				1	
42	CA-006735-01	IO B/D -OP +24V connection cable	IO보드-OP +24V 연결 케이블				1	
43	CA-006736-01	ETHERNET CABLE OP-IO B/D-SHIELD Separation	ETHERNET CABLE OP-IO 보드-SHIELD 분리				1	
44	CA-006781-01	Color Change Motor-Color Change B/D cable	컬러체인지 모터-컬러체인지 보드 케이블				1	
45	CA-006905-01	Color Change B/D-Needle Position B/D	컬러체인지 보드-니들포지션 보드 케이블 (1200)				1	
46	CA-006908-00	Color Change Encoder-Color Change B/D	컬러체인지 엔코더-컬러체인지 보드 케이블				1	
47	CA-006913-00	Poweroff box-Control box Trans input	전원 차단 박스-컨트롤 박스 트랜스 입력				1	
48	CA-006914-00	Magnetic Switch-Start Switch(1600)cable	마그네틱 스위치-기동 스위치 (1600) 케이블				1	
49	CA-006921-00	Picker solenoid-Joint B/D(H-6)cable	피커솔레노이드-조인트보드(H-6) 케이블				1	
50	CA-006923-01	Encoder-Joint B/D Shield cable(1600)	엔코더-조인트보드 실드 케이블(1600)				1	



## Control Box & OP Box 컨트롤 박스 & OP 박스



Ref. No	Part No.	Part Name	품 명	Applicat iondate	Interchan geability	Hard ware	Q'ty	Re marks
1	SWF-00000854	Control Box Ass'y	소두 KS 자수기 컨트롤박스				1	
2	AS-021360-01	Conrtol Box	컨트롤 박스				1	
3	AS-007509-00	Transformer Ass'y(Set)	SHDM TRANS(1PHASE 3.0KVA)-220V				1	
4	EP-000618-00	Noise Filter	NOISE FILTER(RSHN2020)				1	
5	SC-000683-00	Fixing Screw Noise Filter(Set)	SET 나사(M4*L10)				40	
6	BD-000649-04	Power Board	POWER REV03A (SHDM_CON)				1	
7	EP-000268-00	Surge Protector	써지 프로텍터(조)				1	
8	10-016M-SW66	Fixing Screw for Transformer A	트랜스고정나사(M6*L12)				2	
9	10-003S-SW66	Spring Washer	스프링와셔 @6				2	
10	PWS-AA001400	Washer	원형 평와셔(호칭경 6)				2	
11	EP-000068-00	SMPS(12V)	SMPS (+12V)	~ 19.10.31			1	
	EP-000724-00	SMPS(12V)(ORIENT)	SMPS (+12V)(ORIENT)	19.11.01 ~				
12	GP-013749-00	SMPS Bracket	SMPS 브라켓(300F)	~ 19.10.31			1	
	GP-013749-01			19.11.01 ~				
13	BD-000323-00	SMPS Connect Board	POWER REV01 보드	~ 19.10.31			1	
	BD-001922-01	SMPS Connect Board	POWER REV01 보드	19.11.01 ~				
14	PSC-HC000100	Stud for SMPS Connect Board	육각 스테드 ( 4-6-10 )				2	
15	EP-000015-00	SMPS(24V)	SMPS (+24V)	~ 19.10.31			1	
	EP-000725-00	SMPS(24V)(ORIENT)	SMPS (+24V)(ORIENT)	19.11.01 ~				
16	EP-000698-00	SMPS(48V)	SMPS (+48V)	~ 19.10.31			1	
	EP-000726-00	SMPS(48V)(ORIENT)	SMPS (+48V)(ORIENT)	19.11.01 ~				
17	GP-009435-01	SMPS Bracket(B)	SMPS 브라켓(B)				2	
18	EP-000049-00	Fuse Holder	휴즈 홀더				1	
19	EP-000050-02	External Concept	콘센트(570.2061)				1	
20	10-020M-SW66	Fixing Screw for External Concept	SET 나사(M3*L12)				4	
21	GP-009455-00	Base Rubber	베이스고무(466*200*t3.5)				1	
22	GP-017556-00	voltage Fuse Sticker	RST상 전압휴즈사양 스티커				1	
23	GP-017557-00	voltage Fuse Sticker	OUTLET 전압휴즈사양 스티커				1	
24	GP-047599-00	Q.C Passed Sticker	씨리얼넘버(QC PASSED)				1	
25	GP-033380-00	Front Cover	전면커버				1	
26	PSC-BH000300	Fixing Screw for Front Cover(Truss)	트러스나사(M4xP0.7,L=8)				8	
27	04-003S-AU10	Warning Sticker	감전주의표시스티커				1	
28	GP-033898-03	Rear Cover	컨트롤박스 후면커버				1	
29	02-001B-SW67	Switch Cover	스위치 커버				3	
30	SC-000395-00	Screw	M3x10 (트러스 나사)				2	
31	GP-060329-01	Driver Fixing Plate	Con Box_샤시 지지대				1	
32	BD-001809-03	Joint Board	JOINT REV03 (SD)				1	
33	BD-001808-03	ACTUATOR B/d	ACTUATOR REV03 (SD)				1	
34	GP-009442-02	Fixing Bracket for Joint Board	COIL 조인트 고정브라켓				1	
35	02001400T000	Stud for Joint Board	조인트보드스태드볼트(M4*L10)				4	
36	PSC-BA000200	Screw	냄비 작은나사(M4xP0.7, L=35)				8	
37	GP-012729-01	Radiator for Trimming Driver	사절 드라이버 방열판				1	
38	06-001C-SE50	Screw	나사				2	
39	GP-009433-00	Fixing Bracket for Trimming Driver	사절 드라이버 고정 브라켓				1	
40	10-004M-SW68	Screw	나사				3	
41	20032SC-T121	Stud for Trimming Driver(A)	STUD나사(M3*L10)				3	
42	BD-000244-00	Trimming Driver (A)	사절드라이버보드				1	
43	10-012M-PT10	Stud for Trimming Driver(B)	STUD PCB받침(3-5-15)				3	
44	BD-000244-00	Trimming Driver (B)	사절드라이버보드				1	
45	10-021M-SW66	Screw	나사				3	

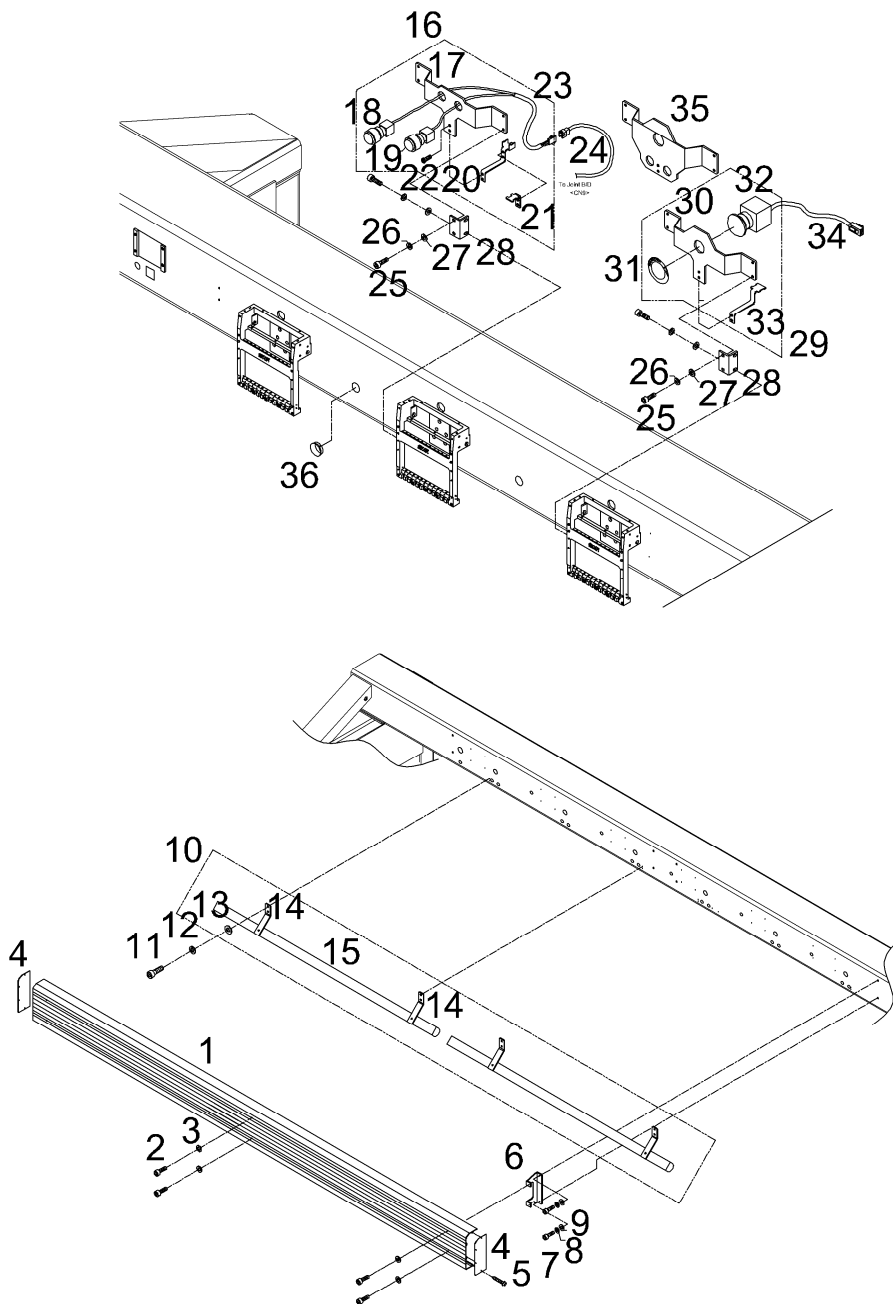
Ref. No	Part No.	Part Name	품 명	Applicat iondate	Interchan geability	Hard ware	Q'ty	Re marks
46	SC-001270-00	Screw	나사 M4*L16				2	
47	EP-000653-00	MainDriver	메인드라이버				1	
48	EP-000654-00	X-YDriver	XY 드라이버				1	
49	GP-060411-00	Fixing Bracket for Drive	R AMP 고정 브라켓브라켓				3	
50	06-001C-SE50	Fixing Screw for Drive	나사				2	
51	SC-001270-00	Screw	나사(M4*L16)				1	
52	GP-009833-00	Y-Driver Sticker	Y-DRIVER 스티커				1	
53	GP-009832-00	X-Driver Sticker	X-DRIVER 스티커				1	
54	GP-009831-00	Main Driver Sticker	MAIN DRIVER 스티커				1	
55	SWF-00000850	WINDOWS OP - 15 inches	WINDOWS OP - 15인치				1	
56	GP-060097-01	15.1 " Front Cover	15.1" 전면커버(EMI)				1	
57	GP-060099-00	15.1 " screen protective gasket (A)	15.1" 스크린 보호가스켓(A)				2	
58	GP-060100-00	15.1 " screen protective gasket (B)	15.1" 스크린 보호가스켓(B)				2	
59	EP-000677-00	15.1 " LCD MONITOR	15.1" LCD MONITOR				1	
60	GP-060093-03	15.1 " LCD base plate	15.1" LCD베이스판				1	
61	BD-001869-00	WINDOWS CPU BOARD	WINDOWS CPU BOARD				1	
62	PSC-DA000600	screw (M3 * L8)	탭핑나사 (M3*L8)				20	
63	BD-001875-00	USB BOARD	USB BOARD				1	
64	GP-043287-01	Speaker (SAC-4028-02B)	스피커(SAC-4028-02B)				2	
65	GP-060098-01	15.1 " Back Cover	15.1" 후면커버				1	
66	GP-060096-03	15.1 "connector indication board	15.1" 컨넥터안내판				1	
67	GP-014362-04	SB Insulated Bushing (B)	SB 절연부싱(B)				10	
68	10-001C-AT10	Insulation Bushing-C	절연부싱 - C				4	
69	GP-019022-00	LCD Insulation Bushing (B)	LCD 절연부싱(B)				4	
70	GP-060101-00	15.1 " key box front cover	15.1" 키박스전면커버				1	
71	GP-054768-00	LED Cover (Blue)	LED Cover(Blue)				1	
72	GP-054765-01	Start S / W (MA-12)	Start S/W(MA-12)				1	
73	GP-054767-00	LED Cover (Red)	LED Cover(Red)				1	
74	GP-054766-01	Stop S / W (MA-12)	Stop S/W(MA-12)				1	
75	GP-055631-01	Direction button key_10.4 "	방향버튼키_10.4"				1	
76	GP-060103-00	15.1 "keybox function key	15.1" 키박스 기능키				1	
77	BD-001842-00	UNIT REV01 (SD_KEY)	UNIT REV01 (SD_KEY)				1	
78	GP-060102-00	15.1 " Key Box Rear Cover	15.1" 키박스후면커버				1	
79	GP-060094-00	15.1 " connection plate	15.1" 연결판				1	
80	GP-060095-01	15.1 " OP fixed bracket	15.1" OP고정브라켓				1	
81	GP-060104-00	15.1 " Key box fixing bracket	15.1" 키박스고정브라켓				1	
82	SC-000683-00	SET screw (M4 * L10)	SET나사(M4*L10)				18	
83	PSC-BB002900	screw (M3 * L5)	접시작은나사(M3*L5)				8	
84	07-027S-SE55	SET screw (M5 * L10)	SET 나사(M5*L10)				6	
85	SC-001270-00	SET screw (M4 * L16)	SET 나사(M4*L16)				4	
86	SC-000684-00	SET screw (M3 * L10)	SET나사(M3*L10)				4	
87	EP-000062-00	Touch Pan	터치 팬				1	
88	EP-000687-00	Panasonic SDHC (Industrial)	Panasonic SDHC(Industrial)				1	
89	CA-006939-00	CPU to USB BOARD CABLE	CPU to USB BOARD 케이블				1	
90	CA-006940-00	CPU to LCD LVDS CABLE	CPU to LCD LVDS 케이블				1	
91	CA-006941-00	CPU to LCD BACK LIGHT CABLE	CPU to LCD BACK LIGHT 케이블				1	
92	CA-005964-01	10.4 " Speaker connection cable	10.4" 스피커 연결 케이블				1	
93	SWF-00000799	Abnormal power shutdown box	비정상 전원 차단박스(조)	~ 19.10.31			1	
	SWF-00000797	Abnormal power shutdown box	비정상 전원 차단박스(조)	19.11.01 ~				
94	GP-052555-01	Noise Filter Box	노이즈 필터 Box	~ 19.10.31			1	

Ref. No	Part No.	Part Name	품 명	Applicat iondate	Interchan geability	Hard ware	Qty	Re marks
94	GP-052555-02	Noise Filter Box	노이즈 필터 Box	19.11.01 ~			1	
95	GP-052556-01	Power shutdown bracket	전원차단 브라켓				1	
96	EP-000142-02	Magnetic switch	마그네틱스위치				1	
97	EP-000530-00	SMPS(COSEL)	과전압 차단박스용 SMPS	~ 19.10.31			1	
	EP-000735-00	SMPS(ORIENT)	과전압 차단박스용 SMPS	19.11.01 ~				
98	SC-001931-04	Stud for B/D fixing	보드 고정용 스테드				2	
99	BD-001005-03	POWER REV02 (1P_INDICATOR)	인디게이터 보드(1P)	~ 19.10.31			1	
	BD-001005-04			19.11.01 ~				
100	BD-000168-04	POWER Rev04 (SURGE-PROTECTOR)	써지 프로텍터 보드				1	
101	BD-001032-00	POWER REV01 (SHMS-CONN) [220V]	MS 보드	~ 19.10.31			1	
	BD-001008-02	POWER REV02 (MS-CONN)	MS 보드	19.11.01 ~				
102	07-004S-SM5S	Screw	엔코더커버그정나사 4*10 (SET)				6	
103	10-002S-SW66	Screw	PCB고정나사M3L8(SP8)SET				4	
104	10-042M-AU10	Screw	고정볼트M4*16(SET)				2	
105	GP-047599-00	QC PASSED sticker	QC PASSED 스티커				1	
106	CA-000704-01	INDICATOR B/D-MS B/D cable(150)	인디케이터 B/D-MS-TOP B/D 케이블(150)				1	
107	CA-005538-02	JOINT B/D TO INDICATOR B/D cable(2500)	조인트 B/D 인디케이터 B/D 케이블(2500)				1	
108	CA-005590-00	DC 24V SMPS AC/DC POWER cable	DC 24V SMPS AC/DC 전원 케이블(LFA50F)	~ 19.10.31			1	
	CA-007260-00	DC 24V SMPS AC/DC POWER cable	DC 24V SMPS AC/DC 전원 케이블(CSF50-24)	19.11.01 ~				
109	CA-005591-00	INDICATOR B/D TO MS-TOP B/D cable	인디케이터 B/D-MS-TOP B/D 케이블				1	
110	SWF-00000851	WINDOWS SUB CON BOX	WINDOWS SUB CON BOX				1	
111	GP-059785-02	SD IO B/D BASE PLATE bracket	SD IO보드 BASE PLATE브라켓				1	
112	GP-059786-00	SD IO B/D CASE bracket	SD IO보드 CASE브라켓				1	
113	EP-000557-01	FAN	FAN				1	
114	BD-001807-04	IO REV03B (SD) B/D	IO REV03B (SD)보드				1	
115	BD-001814-03	CPU REV03 (SD) B/D	CPU REV03 (SD)보드				1	
116	BD-001810-03	Joint Unit Board	Joint Unit Board				1	
117	BD-001819-01	ACTUATOR	ACTUATOR				1	



## Lamp & Switch Mechanism

### 램프 & 스위치 관계

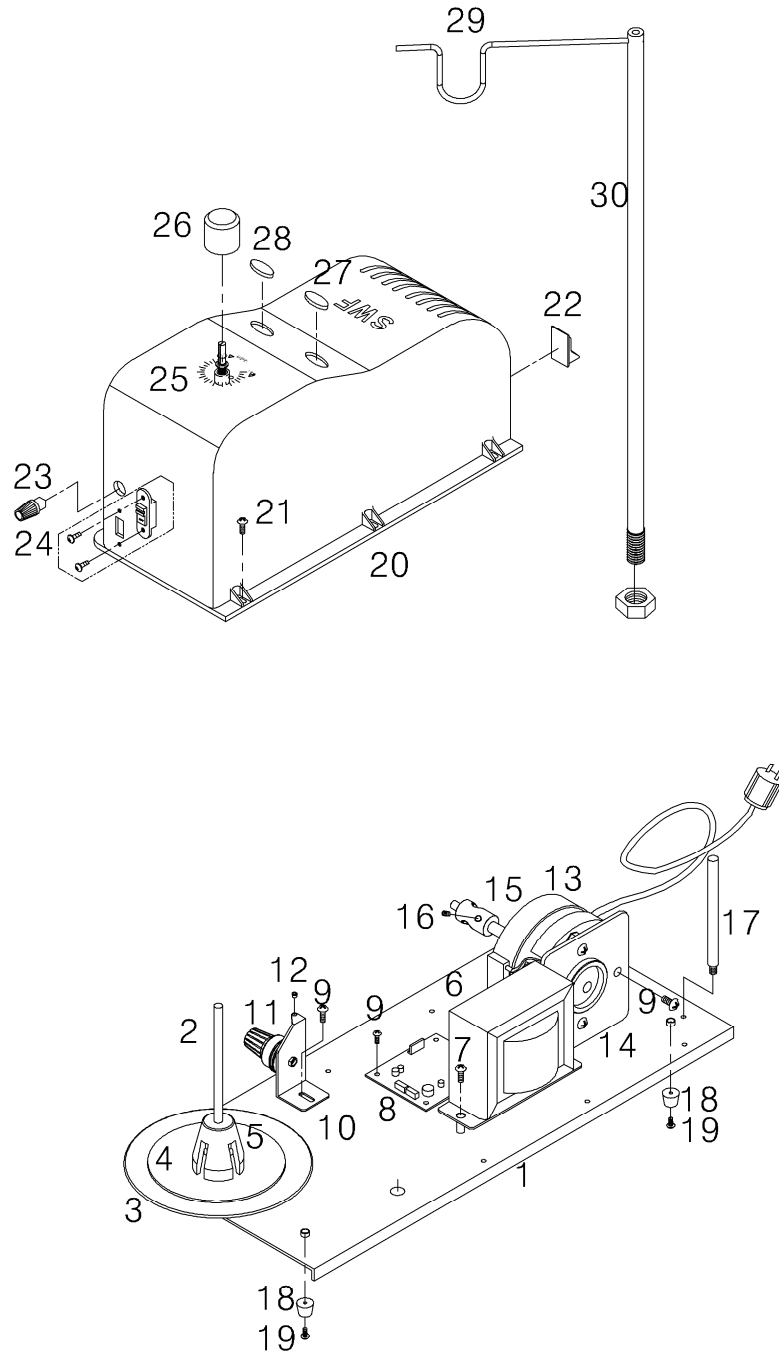


Ref. No	Part No.	Part Name	품 명	Applicat iondate	Interchan geability	Hard ware	Q'ty	Re marks
1	GP-060070-00	Cable Cover	케이블커버				1	
2	PSC-AC004500	Hex. Socket Screw(M5*L10)	육각구멍볼이 볼트(M5xP0.8, L=10)			○	6	
3	PWS-AA001500	Washer (@5)	원형 평와셔(호칭경 5)			○	6	
4	GP-038306-01	CABLE COVER PLATE	케이블커버판(좌)(@40용)				2	
5	02065SC-3328	Tapping Screw (M3*L10)	나사(M3*L10)			○	12	
6	GP-038309-02	CABLE COVER HOLDER	케이블커버홀더(@40용)				3	
7	PSC-AC018600	Hex. Socket Bolt (M5*L12)	육각구멍볼이 볼트(M5xP0.8, L=12)			○	6	
8	PWS-CA000800	Spring Washer (@5)	스프링 와셔(호칭 5)			○	6	
9	PWS-AA001500	Washer (@5)	원형 평와셔(호칭경 5)			○	6	
10	AS-021364-00	LED Lamp Ass'y	LED 램프(조)				2	
11	PSC-AC003900	Hex. Socket Screw(M5*L15)	육각구멍볼이볼트(M5xP0.8,L=15)			○	8	
12	PWS-CA000800	Spring Washer (@5)	스프링 와셔(호칭 5)			○	8	
13	PWS-AA001500	Washer (@5)	원형 평와셔(호칭경 5)			○	8	
14	GP-060059-02	LED Lamp Bracket	LED브라켓				4	
15	GP-060527-00	LED LAMP	LED램프(L1165)			○	2	
16	AS-001966-01	S/B Switch set	S/B 스위치(조)				3	
17	GP-048500-00	S/B Switch Base	S/B스위치베이스				3	
18	EP-000192-00	Start Switch	START S/W(KPB160M-G1)				3	
19	EP-000193-00	Stop Switch	STOP S/W(KPB161M-R1)				3	
20	GP-057844-00	Cable Holder A	케이블잡이A				3	
21	GP-057845-00	Cable Holder B	케이블잡이B				3	
22	PSC-BB000100	C.S Screw (M4*L10)	접시 작은나사(M4xP0.7, L=8)			○	10	
23	25032EL-UK01	Cable (25-28)	스타트스톱스위치 (TO SWITCH)				2	
24	25027EL-UK06	Cable (25-27)	스타트스톱스위치				1	
25	PSC-AC005800	Hex.Socket Bolt (M6*L15)	육각구멍볼이 볼트(M6xP1, L=15)			○	6	
26	PWS-CA002700	Spring Washer (@6)	스프링 와셔(호칭 6)			○	22	
27	PWS-AA001400	Washer (@6)	원형 평와셔(호칭경 6)			○	22	
28	02058PR-UI12	Switch Base Holder	스위치베이스홀더				10	
29	AS-001965-00	Emergency Switch set	비상스위치(조)				2	
30	GP-048501-00	Emergency Switch Base	비상스위치베이스				2	
31	GP-048502-00	Emergency Switch Sticker	비상스위치스티커				2	
32	02000800T000	Emergency Switch	비상스위치				2	
33	GP-048507-01	Cable Holder	케이블잡이				2	
34	02106400U000	Emergency S/W Cable	비상스위치 케이블				2	
35	02008LA-UK12	Switch Base	스위치 베이스				1	
36	02017PM-A001	Cable Ring	케이블링 505H				4	

# O

## Bobbin Winder Mechanism

### 실감기 관계

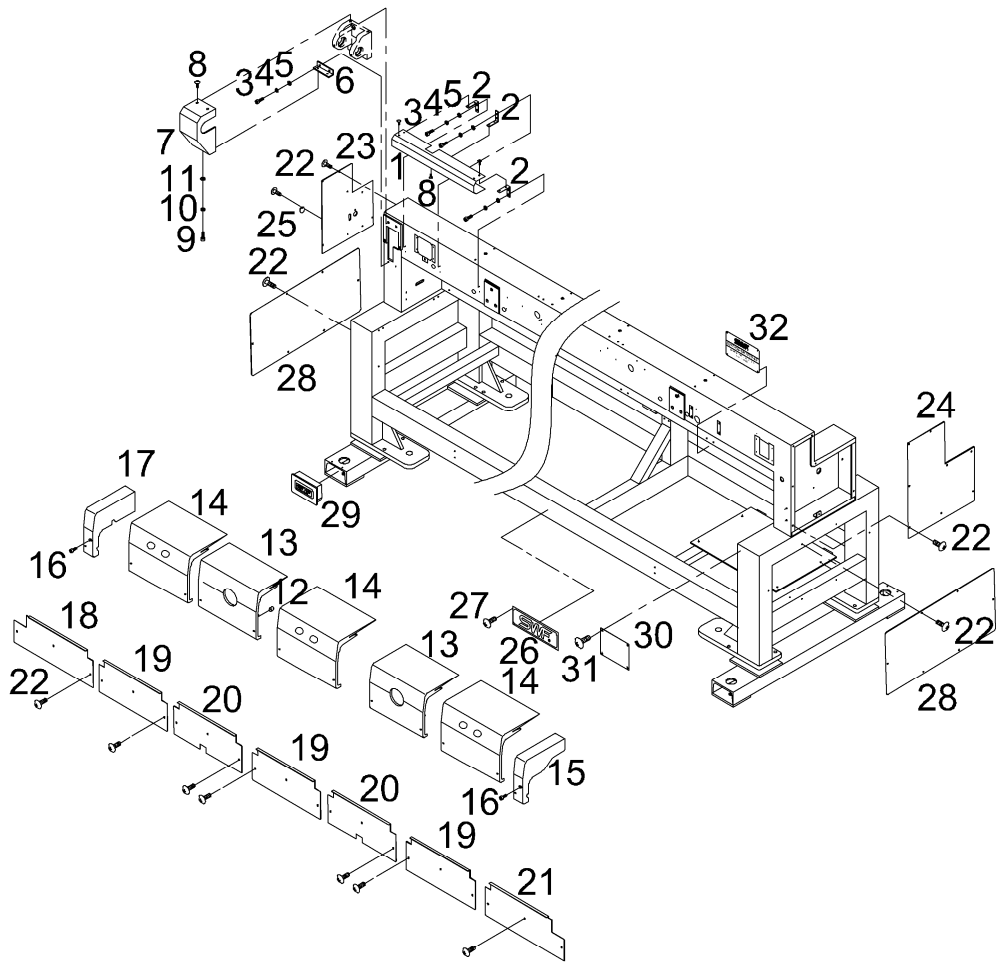


Ref. No	Part No.	Part Name	품 명	Applicat iondate	Interchan geability	Hard ware	Qty	Re marks
1	GP-014870-00	Base	베이스				1	
2	GP-014366-00	Spool Post	실패꽃이 봉				1	
3	GP-014363-00	Spool Support Base	실패꽃이 받침				1	
4	GP-014365-00	Spool Support Base Sponge	실패꽃이 받침 스폰지				1	
5	12012PM-A001	Spool Holder	스풀홀더				1	
6	EP-000078-02	Transformer A'ssy	트랜스포머(조)				1	
7	PSC-BH000700	Truss Screw (M4*L12)	나사(M4XL10)			○	8	
8	EP-000095-00	PCB (DW-BW01)	보빈와인더용 PCB 기판(BARE B/D)				1	
9	PSC-BH000600	Truss Screw (M4*L6)	나사(M4XL6)			○	9	
10	GP-014370-00	Tension Control Holder	장력 조절 홀더				1	
11	AS-003951-00	Thread Control Device Ass'y	실 장력 조절 제어장치(조)				1	
12	DBS-DB002400	Thread Guide Bushing	실안내붓싱A				1	
13	MO-000029-00	Motor Ass'y	Motor (AC모터)				1	
14	GP-014871-00	Motor Bracket	모터 브라켓				1	
15	GP-014354-03	Bobbin Shaft	보빈 축				1	
16	PSC-CB005700	Set Screw (M5*L4)	참나사(M5xL4)			○	1	
17	02026SC-A001	Stand	보빈스탠드				1	
18	GP-014346-00	Rubber For Support Base	고무 바닥 지지대				4	
19	PSC-BH002200	Truss Screw (M3*L8)	코드안내C고정나사(M3xL8)			○	4	
20	GP-014869-02	Cover	보빈 와인더 커버				1	
21	PSC-BH000700	Truss Screw (M4*L12)	나사(M4XL10)			○	8	
22	EP-000079-00	On / Off Switch	보빈와인더 전원스위치				1	
23	GP-014678-00	Fuse Holder	퓨즈 홀더				1	
24	EP-000082-00	Switch (Select)	스위치				1	
25	GP-014677-00	VR Knob	VR KNOB				1	
26	EP-000083-00	VR	VR 1MΩ, 외경(φ16), 축(φ7xL15mm)				1	
27	EP-000080-00	Push Switch (Start)	PUSH 스위치(Start)				1	
28	EP-000081-00	Push Switch (Stop)	PUSH 스위치(Stop)				1	
29	GP-014369-00	Antenna Bar Hanger	안테나 바 걸이				2	
30	GP-014368-00	Antenna Bar	안테나 바				1	

P

# Cover Mechanism

커버 관계

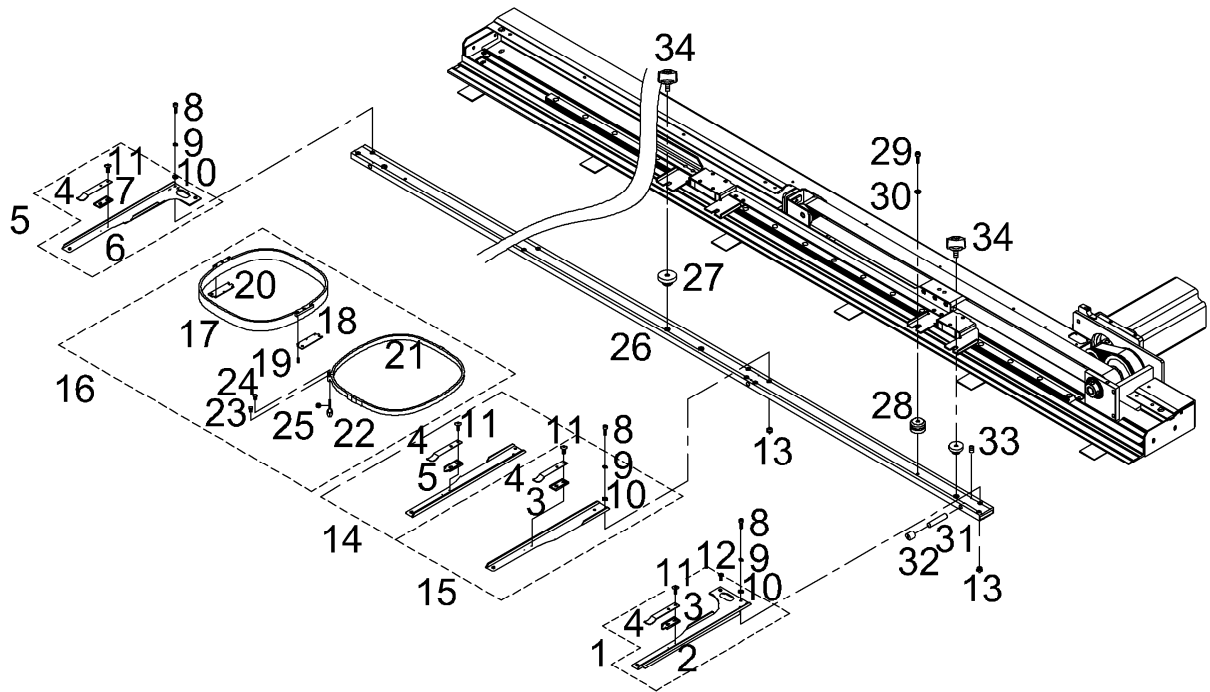


Ref. No	Part No.	Part Name	품 명	Applicat iondate	Interchan geability	Hard ware	Qty	Re marks
1	GP-060066-00	Top Shaft Cover D	상축커버(D)				1	
2	02025PR-UK02	Top Shaft Cover (C) Bracket L	상축커버C브라켓-좌				3	
3	PSC-AC004500	Hex. Socket Screw(M5*L10)	육각구멍볼이 볼트(M5xP0.8, L=10)			○	10	
4	PWS-CA000800	Spring Washer (@5)	E스프링와셔(호칭경5)			○	24	
5	PWS-AA001500	Washer (@5)	원형 평와셔(호칭경 5)			○	8	
6	02031PR-UK02	Pulley Cover Bracket	상축폴리커버브라켓				1	
7	GP-054876-01	Top Shaft Pulley Cover	상축폴리커버				1	
8	PSC-BH000600	Truss Screw (M4*L6)	트러스 작은나사(M4xP0.7, L=6)			○	7	
9	PSC-AC004100	HEX.SOCKET BOLT (M4*L8)	육각구멍볼이 볼트(M4xP0.7, L=8)			○	2	
10	PWS-CA000900	SPRING WASHER (@4-NO2)	스프링 와셔(호칭 4)			○	2	
11	PWS-AA001000	WASHER (4@)	원형 평와셔(호칭경 4)			○	2	
12	DTC-AK000100	Top Shaft Cover Magnet	자석 A001(C)				10	
13	09000205UH00	Top Shaft Cover "B" (L146)	상축커버B(L146)				2	
14	09000305UH00	Top Shaft Cover "C" (L146)	상축커버C(L146)				3	
15	BMB-PS000101	TOP SHAFT COVER(R)SET	상축커버(우)				1	
16	PSC-AC016100	Hex. Socket Bolt (M4*L5)	상축커버침나사A(M4XL5)			○	2	
17	BMB-PS000202	TOP SHAFT COVER(L)SET	상축커버(좌)조				1	
18	GP-060062-01	Body Front Cover (A)	바디전면커버(A)				1	
19	GP-048803-00	Body Front Cover (B)	바디전면커버(B)(399*219*2T)				3	
20	09001100UH80	Body Front Cover (D)	바디전면커버(D)				2	
21	GP-060063-02	Body Front Cover (F)	바디전면커버(F)				1	
22	PSC-BH000200	Truss Screw (M5*L8)	트러스 작은나사(M5xP0.8, L=8)				59	
23	GP-060065-01	Beam Bracket Cover(L)	빔브라켓커버(좌)				1	
24	GP-060064-01	Beam Bracket Cover(R)	빔브라켓커버(우)				1	
25	LUP-BJ000400	Main Motor Pulley Cover	메인구동모터폴리커버(@28)				1	
26	02101ET-UK01	Brand Mark	브랜드판				1	
27	PSC-BB002100	Plus Screw (M4*L8)	접시나사(M4XL8)			○	4	
28	GP-008790-01	Body Side Cover	바디측면커버				2	
29	01022RB-UK01	Body Base Cover	바디받침커버(73*125*20)				4	
30	GP-014763-04	Model Name Plate	명판				1	
31	PSC-BH001100	Truss Screw (M4*L8)	트러스 작은나사(M4xP0.7, L=8)			○	4	

# Q1

## Tubular Mechanism

### 튜블라 관계



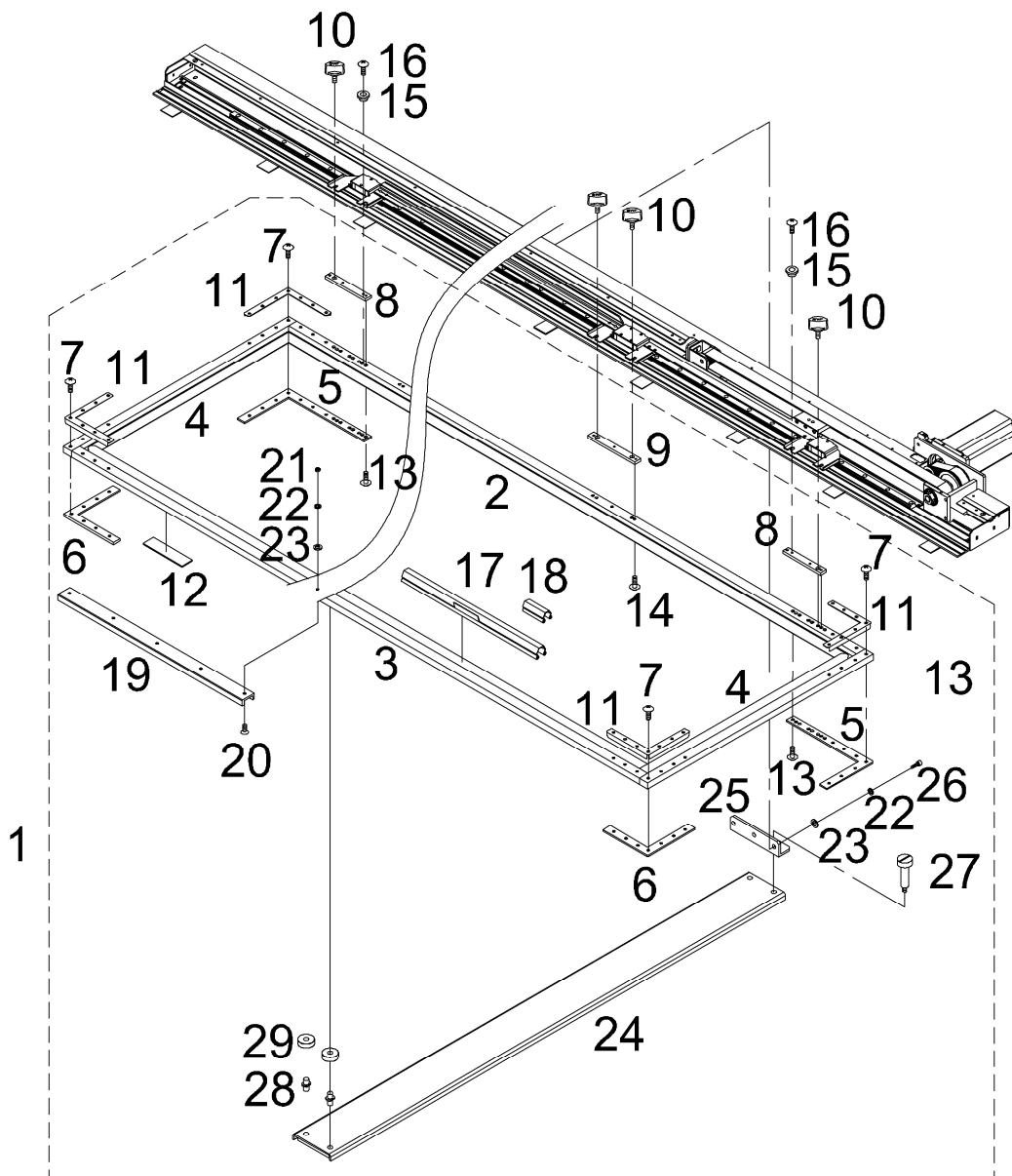




# Q2

## Border Frame Mechanism

보더 후레임 관계



Ref. No	Part No.	Part Name	품 명	Applicat iondate	Interchan geability	Hard ware	Qty	Re marks
1	AS-021363-01	Border Frame Assy	보더후레임(조)				1	
2	GP-045567-01	RearBorderFrameSash L=2160	보더후레임A				1	
3	GP-060310-00	Front Border Frame Sash L=2143	보더후레임B				1	
4	GP-045564-01	Border Frame Sash L=575	보더후레임C				2	
5	24004PR-UK02	Connecting Plate "E"	사각후레임이음판E				2	
6	GP-060311-00	Connecting Plate "F"	사각후레임이음판F				2	
7	PSC-BH000200	Truss Screw (M5*L8)	트러스 작은나사(M5xP0.8,L=8)			○	28	
8	GP-045570-00	Square Frame Fixing Plate A	보더후레임고정판A				2	
9	GP-045571-00	Square Frame Fixing Plate B	보더후레임고정판B				4	
10	SC-000413-01	Tubular Frame Fixing Screw	튜블라후레임고정나사(M5)				6	
11	GP-060445-00	Connecting Plate "C"	보더후레임보강판				4	
12	GP-053138-01	Felt	수틀헬트(I) 8T L135 B7.5				6	
13	PSC-BH001100	Truss Screw (M4*L8)	트러스 작은나사(M4xP0.7,L=8)			○	6	
14	PSC-BH000600	Truss Screw (M4*L6)	트러스 작은나사(M4xP0.7,L=6)			○	6	
15	18025PM-UK01	Location Block	위치결정와셔(@15*L5)				2	
16	PSC-BH000700	Plus Screw (M4*L10)	트러스 작은나사(M4xP0.7,L=10)				2	
17	GP-021043-01	Embroidery Frame Clip L,300	수틀클립A형(L300-10)				16	
	GP-021042-01	Embroidery Frame Clip	수틀클립A형(L250-10)				2	
	GP-021354-01	Embroidery Frame Clip L,220	수틀클립A형(L220-10)				2	
18	18086PR-B001	Frame Clip Support	수틀클립보강판				40	
19	GP-060312-00	Guide for Bearing [L=500]	베어링가이드(L500)				1	
20	PSC-BH002000	Hex. Socket Bolt(M4*L12)	나사(M4XL8)				5	
21	PSN-AG000400	Cap Nut(@4)	육각 캡 너트(M4xP0.7)				5	
22	PWS-CA000900	Spring Washer (@4)	스프링 와셔(호칭 4)				8	
23	PWS-AA001000	Washer (4@)	원형 평와셔(호칭경 4)				8	
24	GP-060313-01	Border frame connection cover	보더후레임연결커버				1	
25	GP-060314-00	Border frame connection cover bracket	보더후레임연결커버브라켓				1	
26	PSC-AC007100	Hex. Socket Bolt(M4xL10)	육각구멍볼이 볼트(M4xP0.7,L=10)				3	
27	SC-002078-01	Border frame fixing screw	보더후레임 고정 나사				2	
28	ST-001414-00	Border frame guide shaft	보더후레임가이드축				2	
29	PBR-AA011800	Ball Bearings (LR606-2RSR-A-HLW)	볼베어링(LR606-2RSR-A-HLW)				2	